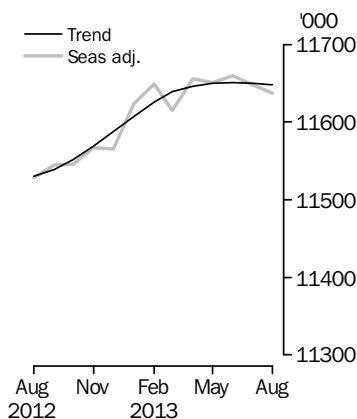


# LABOUR FORCE

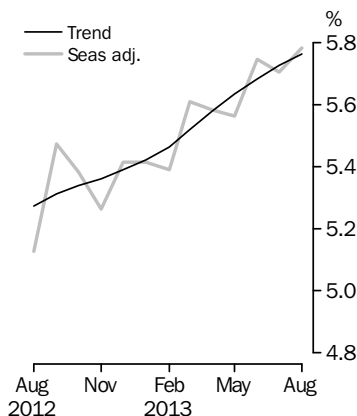
AUSTRALIA

EMBARGO: 11.30AM (CANBERRA TIME) THURS 12 SEP 2013

## Employed Persons



## Unemployment Rate



## INQUIRIES

For further information about these and related statistics, contact the National Information and Referral Service on 1300 135 070, email [client.services@abs.gov.au](mailto:client.services@abs.gov.au) or Labour Force on Canberra (02) 6252 6525, email [labourforce@abs.gov.au](mailto:labourforce@abs.gov.au).

## KEY FIGURES

	Jul 2013	Aug 2013	Jul 13 to Aug 13	Aug 12 to Aug 13
<b>Trend</b>				
Employed persons ('000)	11 649.8	11 648.3	-1.5	1.0 %
Unemployed persons ('000)	707.7	712.4	4.7	11.0 %
Unemployment rate (%)	5.7	5.8	0.0 pts	0.5 pts
Participation rate (%)	65.1	65.1	0.0 pts	-0.1 pts
<b>Seasonally Adjusted</b>				
Employed persons ('000)	11 647.9	11 637.1	-10.8	0.9 %
Unemployed persons ('000)	704.7	714.1	9.4	14.6 %
Unemployment rate (%)	5.7	5.8	0.1 pts	0.7 pts
Participation rate (%)	65.1	65.0	-0.1 pts	-0.1 pts

## KEY POINTS

### TREND ESTIMATES (MONTHLY CHANGE)

- Employment decreased to 11,648,300.
- Unemployment increased to 712,400.
- Unemployment rate at 5.8%.
- Participation rate steady at 65.1% from a revised July 2013 estimates.
- Aggregate monthly hours worked increased to 1,647.3 million hours.

### SEASONALLY ADJUSTED ESTIMATES (MONTHLY CHANGE)

- Employment decreased 10,800 (0.1%) to 11,637,100. Full-time employment decreased 2,600 to 8,128,800 and part-time employment decreased 8,200 to 3,508,300.
- Unemployment increased 9,400 (1.3%) to 714,100. The number of persons looking for full-time work decreased 2,300 to 516,300 and the number of persons looking for part-time work increased 11,700 to 197,800.
- The unemployment rate increased 0.1 pts to 5.8%.
- The participation rate decreased 0.1 pts to 65.0%.
- Aggregate monthly hours worked increased 1.1 million hours to 1,650.0 million hours.

### LABOUR UNDERUTILISATION (QUARTERLY CHANGE)

- Trend estimates: The labour force underutilisation rate increased 0.4 pts to 13.5%.
- Seasonally adjusted estimates: The labour force underutilisation rate increased 0.7 pts to 13.7%. The male labour force underutilisation rate increased 0.6 pts to 11.8%. The female labour force underutilisation increased 0.8 pts to 15.9%.

# NOTES

## FORTHCOMING ISSUES

<i>ISSUE</i>	<i>RELEASE DATE</i>
September 2013	10 October 2013
October 2013	7 November 2013
November 2013	12 December 2013
December 2013	16 January 2014
January 2014	13 February 2014
February 2014	13 March 2014

## ABOUT THE DATA

The About the Data section on pages 4–5 provides information on:

- Implementation of sample redesign
- Introduction of online self completion
- Response rate.

## ROUNDING

Estimates of monthly and quarterly changes shown on the front cover and used in the commentary have been calculated using unrounded estimates, and may be different from, but are more accurate than, movements obtained from the rounded estimates. The graphs on the front cover also depict unrounded estimates.

## SAMPLING ERROR

The estimates in this publication are based on a sample survey. Published estimates and the movements derived from them are subject to sampling variability. Standard errors give a measure of sampling variability (see Standard Errors section). The interval bounded by two standard errors is the 95% confidence interval, which provides a way of looking at the variability inherent in estimates. There is a 95% chance that the true value of the estimate lies within that interval.

The standard errors may not fully reflect the variability resulting from a lower response rate in August. See About the Data on pages 4–5.

## MOVEMENTS IN SEASONALLY ADJUSTED SERIES BETWEEN JULY 2013 AND AUGUST 2013

	<i>Monthly change</i>	<i>95% Confidence interval</i>
Total Employment	-10 800	-72 400 to 50 800
Total Unemployment	9 400	-29 000 to 47 800
Unemployment rate	0.1 pts	-0.3 pts to 0.5 pts
Participation rate	-0.1 pts	-0.5 pts to 0.3 pts

Brian Pink  
Australian Statistician

# LABOUR FORCE COMMENTARY AUGUST 2013

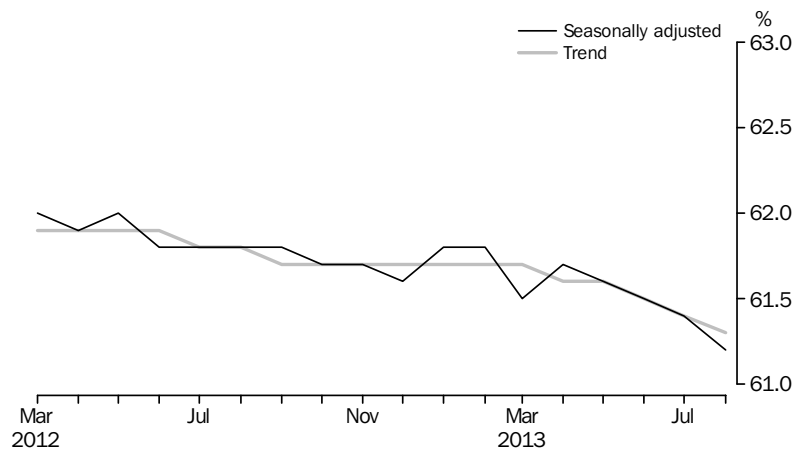
## NATIONAL ESTIMATES

Australia's unemployment rate increased by 0.1% to 5.8% in August 2013 in seasonally adjusted terms. The trend unemployment rate was 5.8%, an increase of less than 0.0 percentage points when calculated using unrounded estimates. The number of unemployed persons increased by 9,400 to 714,100 in August 2013 (seasonally adjusted), while in trend terms the number of unemployed persons in August 2013 rose by 4,700 to 712,400.

August 2013 saw the seasonally adjusted participation rate decrease 0.1 percentage points to 65.0%. The trend participation rate remained at 65.1% in August 2013, following a revision to the July estimate.

The seasonally adjusted number of employed persons fell by 10,800 in August 2013 to 11,637,100 persons. In trend terms, employment decreased by 1,500 persons to 11,648,300 persons in August 2013. The employment to population ratio, which expresses the number of employed persons as a percentage of the civilian population aged 15 years and over, decreased by 0.1 pts to 61.2% (seasonally adjusted). The trend employment to population ratio decreased by 0.1 pts to 61.3%.

### EMPLOYMENT TO POPULATION RATIO, PERSONS, March 2012 to August 2013



Seasonally adjusted full-time employment fell in August 2013, down 2,600 persons to 8,128,800 persons while part-time employment fell by 8,200 persons to 3,508,300 persons. The decrease in total employment resulted from:

- a decrease in male full-time employment, down 15,600 persons
- a decrease in female part-time employment, down 13,300 persons
- an increase in female full-time employment, up 13,000 persons
- an increase in male part-time employment, up 5,100 persons.

Despite the decrease in total employment, seasonally adjusted aggregate hours worked increased 1.1 million hours in August 2013 to 1,650 million hours.

STATE ESTIMATES

The largest absolute decreases in seasonally adjusted employment were in Queensland (down 5,000 persons), Victoria (down 2,100 persons), and South Australia (down 1,400 persons). The largest increase in the number of employed persons was in New South Wales, up 700 persons (seasonally adjusted). Seasonally adjusted estimates are not published for the territories.

UNEMPLOYMENT RATE, STATE AND TERRITORIES—July 2013 and August 2013

	TREND		SEASONALLY ADJUSTED	
	July	August	July	August
	%	%	%	%
New South Wales	5.7	5.7	5.7	5.9
Victoria	5.7	5.7	5.7	5.7
Queensland	6.0	6.0	5.9	6.0
South Australia	6.5	6.8	7.1	6.8
Western Australia	4.9	4.8	4.6	5.0
Tasmania	8.4	8.6	8.2	8.3
Northern Territory	5.4	5.5	np	np
Australian Capital Territory	3.7	3.7	np	np
<b>Australia</b>	<b>5.7</b>	<b>5.8</b>	<b>5.7</b>	<b>5.8</b>

np not available for publication but included in totals where applicable, unless otherwise indicated

ABOUT THE DATA

*Implementation of Sample Redesign*

Phase-in of a new sample design was completed in August. For further details, refer to the article on page 10 of the May 2013 issue of this publication and the *Information Paper: Labour Force Survey Sample Design, May 2013* (ABS cat. no. 6269.0).

The phase-in of a new Labour Force Survey sample commenced in May 2013 and was completed in August. The phase-in has resulted in a short term increase in the standard errors associated with Labour Force data. Standard errors on month-to-month movement estimates are predicted to increase by approximately 10% during this period but will only have a marginal impact on the quality of level estimates. These increased standard errors are reflected in the table on page 2 in the Notes page.

The simultaneous introduction of two rotation groups per month between May and August 2013 has resulted in a lower proportion of the sample matched between months. The phase-in of the new sample is reflected in smaller estimates in the gross flows in Table 17 on page 22.

*Introduction of Online  
Self-Completion*

As previously advised the ABS is introducing online self-completion to the Labour Force Survey and other collections. Online self-completion was offered to 100% of private dwellings in the December 2012 incoming rotation group and to 50% of private dwellings in each of the two incoming rotation groups from May 2013 to August 2013. From September 2013, the ABS will expand the offer of online self-completion from 50% to 100% of private dwellings in each incoming rotation group. From April 2014, 100% of the whole labour force sample from private dwellings will be offered the online self-completion option.

In August 2013, 50% of the private dwelling sample was offered online self-completion and this will rise to 56.25% in September. The ABS has been monitoring any potential impacts of the transition to online self-completion.

Over the first four months of the roll-out period no large statistical impact (larger than three standard errors) has been identified. The ABS will continue analysis over the next 12 months to identify and quantify if there has been any statistical impact.

The August 2013 survey was completed via online self-completion for 9% of the survey sample.

*Response rate*

The ABS experienced technical issues for the August 2013 Labour Force Survey which have impacted on the response rate. The response rate for the August 2013 survey was 93%, which is lower than the average of the last twelve months (96%). The response rate is usually slightly lower for each August survey due to the addition of the supplementary Employee Earnings, Benefits and Trade Union Membership Survey. The response rate for the August 2012 survey was 96%. The lower response rate may have resulted in slightly more variability in the estimates when compared with previous months. This is not reflected in the standard errors presented in this publication as they are modelled rather than calculated each month.

# LABOUR FORCE STATUS (AGED 15 YEARS & OVER): Trend

	EMPLOYED			UNEMPLOYED		Labour force	UNEMPLOYMENT RATE		Participation rate
	Full time	Part time	Total	Looking for f/t work	Total		Looking for f/t work	Total	
	'000	'000	'000	'000	'000		%	%	
MALES									
August 2010	5 125.2	1 006.0	6 131.2	250.5	320.9	6 452.1	4.7	5.0	72.4
August 2011	5 197.1	1 004.2	6 201.3	263.2	329.4	6 530.7	4.8	5.0	72.2
2012									
August	5 250.3	1 008.6	6 258.9	280.2	346.9	6 605.8	5.1	5.3	71.8
September	5 258.4	1 004.6	6 263.0	286.2	352.5	6 615.5	5.2	5.3	71.8
October	5 264.5	1 005.4	6 269.9	288.4	356.1	6 626.0	5.2	5.4	71.8
November	5 267.8	1 011.1	6 278.9	287.9	358.2	6 637.1	5.2	5.4	71.8
December	5 268.8	1 019.6	6 288.4	286.8	359.6	6 647.9	5.2	5.4	71.8
2013									
January	5 267.8	1 029.6	6 297.4	287.6	361.4	6 658.8	5.2	5.4	71.8
February	5 266.7	1 038.9	6 305.6	291.3	364.5	6 670.1	5.2	5.5	71.8
March	5 265.6	1 046.4	6 311.9	296.8	368.8	6 680.8	5.3	5.5	71.8
April	5 264.3	1 051.7	6 316.0	302.4	373.6	6 689.6	5.4	5.6	71.8
May	5 262.4	1 055.6	6 318.0	306.7	378.1	6 696.1	5.5	5.6	71.7
June	5 259.3	1 059.1	6 318.4	309.9	382.3	6 700.7	5.6	5.7	71.7
July	5 255.2	1 062.4	6 317.7	312.2	385.9	6 703.6	5.6	5.8	71.6
August	5 251.6	1 063.8	6 315.4	313.6	388.8	6 704.2	5.6	5.8	71.5
FEMALES									
August 2010	2 764.1	2 328.3	5 092.4	179.2	291.1	5 383.5	6.1	5.4	58.8
August 2011	2 825.0	2 382.6	5 207.5	180.0	291.5	5 499.0	6.0	5.3	59.1
2012									
August	2 861.2	2 409.6	5 270.8	185.9	295.1	5 565.9	6.1	5.3	58.8
September	2 865.2	2 410.4	5 275.6	186.2	294.9	5 570.5	6.1	5.3	58.8
October	2 868.3	2 413.6	5 282.0	186.4	295.4	5 577.4	6.1	5.3	58.8
November	2 870.1	2 419.7	5 289.9	187.0	297.2	5 587.1	6.1	5.3	58.8
December	2 870.9	2 428.7	5 299.6	188.4	300.4	5 600.0	6.2	5.4	58.9
2013									
January	2 871.3	2 438.6	5 309.9	190.7	304.0	5 613.9	6.2	5.4	58.9
February	2 872.2	2 447.5	5 319.7	193.8	307.5	5 627.2	6.3	5.5	58.9
March	2 873.8	2 453.0	5 326.9	197.5	311.0	5 637.9	6.4	5.5	59.0
April	2 875.9	2 454.6	5 330.5	201.1	314.5	5 645.0	6.5	5.6	59.0
May	2 877.3	2 454.3	5 331.6	204.2	317.2	5 648.9	6.6	5.6	58.9
June	2 878.8	2 453.4	5 332.2	206.6	319.6	5 651.8	6.7	5.7	58.9
July	2 880.4	2 451.8	5 332.2	208.4	321.8	5 654.0	6.7	5.7	58.8
August	2 882.5	2 450.4	5 332.9	209.5	323.6	5 656.5	6.8	5.7	58.8
PERSONS									
August 2010	7 889.3	3 334.3	11 223.6	429.6	612.0	11 835.6	5.2	5.2	65.5
August 2011	8 022.1	3 386.8	11 408.8	443.2	620.9	12 029.7	5.2	5.2	65.6
2012									
August	8 111.5	3 418.2	11 529.7	466.1	642.0	12 171.7	5.4	5.3	65.2
September	8 123.6	3 415.0	11 538.6	472.4	647.4	12 186.0	5.5	5.3	65.2
October	8 132.9	3 419.0	11 551.9	474.8	651.5	12 203.4	5.5	5.3	65.2
November	8 137.9	3 430.8	11 568.8	474.9	655.4	12 224.2	5.5	5.4	65.2
December	8 139.7	3 448.3	11 587.9	475.2	660.0	12 247.9	5.5	5.4	65.2
2013									
January	8 139.1	3 468.1	11 607.2	478.3	665.4	12 272.6	5.6	5.4	65.3
February	8 138.9	3 486.5	11 625.4	485.0	671.9	12 297.3	5.6	5.5	65.3
March	8 139.4	3 499.4	11 638.8	494.3	679.8	12 318.7	5.7	5.5	65.3
April	8 140.2	3 506.3	11 646.5	503.5	688.2	12 334.6	5.8	5.6	65.3
May	8 139.8	3 509.9	11 649.7	510.9	695.3	12 345.0	5.9	5.6	65.2
June	8 138.1	3 512.5	11 650.6	516.5	701.9	12 352.5	6.0	5.7	65.2
July	8 135.6	3 514.2	11 649.8	520.6	707.7	12 357.5	6.0	5.7	65.1
August	8 134.1	3 514.2	11 648.3	523.1	712.4	12 360.7	6.0	5.8	65.1

LABOUR FORCE STATUS (AGED 15 YEARS & OVER): **Seasonally Adjusted**

	EMPLOYED			UNEMPLOYED		Labour force	UNEMPLOYMENT RATE		Participation rate
	Full time	Part time	Total	Looking for f/t work	Total		Looking for f/t work	Total	
	'000	'000	'000	'000	'000		%	%	
MALES									
August 2010	5 118.5	1 016.9	6 135.4	242.1	307.0	6 442.5	4.5	4.8	72.3
August 2011	5 199.5	1 000.9	6 200.4	271.1	339.7	6 540.1	5.0	5.2	72.3
2012									
August	5 252.3	1 006.3	6 258.7	286.7	343.0	6 601.7	5.2	5.2	71.7
September	5 250.7	1 000.9	6 251.6	300.5	371.1	6 622.7	5.4	5.6	71.8
October	5 272.1	1 006.0	6 278.2	285.3	349.3	6 627.5	5.1	5.3	71.8
November	5 273.7	1 005.1	6 278.8	281.1	353.1	6 632.0	5.1	5.3	71.7
December	5 268.2	1 017.6	6 285.7	289.6	361.9	6 647.7	5.2	5.4	71.8
2013									
January	5 271.5	1 021.5	6 292.9	285.3	362.6	6 655.6	5.1	5.4	71.8
February	5 255.1	1 067.5	6 322.7	279.4	357.2	6 679.8	5.0	5.3	71.9
March	5 261.2	1 037.9	6 299.1	307.3	377.4	6 676.5	5.5	5.7	71.7
April	5 270.6	1 043.3	6 313.9	303.4	369.6	6 683.5	5.4	5.5	71.7
May	5 268.5	1 058.5	6 327.0	305.3	372.6	6 699.6	5.5	5.6	71.8
June	5 260.9	1 062.7	6 323.6	314.2	391.1	6 714.7	5.6	5.8	71.8
July	5 255.3	1 061.1	6 316.3	311.9	386.4	6 702.8	5.6	5.8	71.6
August	5 239.7	1 066.2	6 305.9	309.0	386.2	6 692.1	5.6	5.8	71.4
FEMALES									
August 2010	2 774.3	2 313.3	5 087.6	176.2	289.5	5 377.2	6.0	5.4	58.7
August 2011	2 820.3	2 384.4	5 204.7	181.8	291.4	5 496.1	6.1	5.3	59.1
2012									
August	2 847.4	2 422.2	5 269.6	184.2	280.0	5 549.6	6.1	5.0	58.7
September	2 885.1	2 408.5	5 293.6	187.9	297.2	5 590.8	6.1	5.3	59.0
October	2 875.0	2 392.7	5 267.7	187.8	307.7	5 575.3	6.1	5.5	58.8
November	2 866.1	2 422.8	5 289.0	184.0	289.6	5 578.6	6.0	5.2	58.7
December	2 855.0	2 424.6	5 279.6	189.8	300.2	5 579.8	6.2	5.4	58.7
2013									
January	2 880.3	2 450.2	5 330.4	189.3	302.8	5 633.3	6.2	5.4	59.1
February	2 877.8	2 448.8	5 326.6	193.3	306.5	5 633.1	6.3	5.4	59.0
March	2 864.2	2 452.1	5 316.3	196.8	312.7	5 629.0	6.4	5.6	58.9
April	2 883.5	2 458.7	5 342.2	202.2	319.8	5 661.9	6.6	5.6	59.1
May	2 875.4	2 448.3	5 323.7	203.6	313.9	5 637.6	6.6	5.6	58.8
June	2 877.7	2 457.9	5 335.7	211.5	319.7	5 655.4	6.8	5.7	58.9
July	2 876.1	2 455.4	5 331.5	206.6	318.3	5 649.8	6.7	5.6	58.8
August	2 889.1	2 442.1	5 331.2	207.3	327.9	5 659.1	6.7	5.8	58.8
PERSONS									
August 2010	7 892.9	3 330.2	11 223.1	418.3	596.6	11 819.6	5.0	5.0	65.4
August 2011	8 019.9	3 385.3	11 405.1	452.9	631.2	12 036.3	5.3	5.2	65.6
2012									
August	8 099.7	3 428.5	11 528.2	470.9	623.0	12 151.3	5.5	5.1	65.1
September	8 135.8	3 409.4	11 545.2	488.4	668.3	12 213.5	5.7	5.5	65.3
October	8 147.1	3 398.7	11 545.9	473.1	657.0	12 202.8	5.5	5.4	65.2
November	8 139.8	3 428.0	11 567.8	465.1	642.8	12 210.6	5.4	5.3	65.1
December	8 123.1	3 442.2	11 565.3	479.4	662.1	12 227.4	5.6	5.4	65.1
2013									
January	8 151.8	3 471.6	11 623.4	474.6	665.4	12 288.8	5.5	5.4	65.3
February	8 132.9	3 516.3	11 649.3	472.7	663.7	12 313.0	5.5	5.4	65.4
March	8 125.4	3 490.0	11 615.3	504.1	690.1	12 305.5	5.8	5.6	65.2
April	8 154.0	3 502.1	11 656.1	505.5	689.3	12 345.4	5.8	5.6	65.3
May	8 144.0	3 506.8	11 650.7	508.9	686.4	12 337.2	5.9	5.6	65.2
June	8 138.7	3 520.6	11 659.3	525.7	710.8	12 370.1	6.1	5.7	65.3
July	8 131.4	3 516.4	11 647.9	518.6	704.7	12 352.5	6.0	5.7	65.1
August	8 128.8	3 508.3	11 637.1	516.3	714.1	12 351.2	6.0	5.8	65.0

LABOUR FORCE STATUS (AGED 15 YEARS & OVER): Original

	EMPLOYED			UNEMPLOYED		Labour force	Not in labour force	Civilian population aged 15 years and over	UNEMPLOYMENT RATE		Participation rate
	Full time	Part time	Total	Looking for f/t work	Total				Looking for f/t work	Total	
	'000	'000	'000	'000	'000				'000	'000	
MALES											
August 2010	5 072.7	1 010.8	6 083.6	231.8	293.9	6 377.4	2 528.6	8 906.1	4.4	4.6	71.6
August 2011	5 148.9	995.7	6 144.6	262.2	328.2	6 472.7	2 571.9	9 044.6	4.8	5.1	71.6
2012											
August	5 196.9	1 002.1	6 199.0	280.0	334.2	6 533.2	2 673.6	9 206.9	5.1	5.1	71.0
September	5 285.0	990.0	6 275.0	299.8	378.5	6 653.6	2 567.3	9 220.8	5.4	5.7	72.2
October	5 263.9	1 020.4	6 284.3	281.1	341.8	6 626.1	2 607.0	9 233.1	5.1	5.2	71.8
November	5 274.8	986.2	6 261.1	265.0	329.4	6 590.5	2 655.0	9 245.5	4.8	5.0	71.3
December	5 339.9	1 022.7	6 362.6	275.1	349.8	6 712.5	2 545.3	9 257.7	4.9	5.2	72.5
2013											
January	5 261.1	990.1	6 251.2	307.4	388.4	6 639.6	2 635.5	9 275.1	5.5	5.8	71.6
February	5 281.2	1 023.3	6 304.5	310.8	399.9	6 704.4	2 588.1	9 292.4	5.6	6.0	72.1
March	5 245.8	1 047.4	6 293.2	316.4	396.2	6 689.4	2 620.3	9 309.8	5.7	5.9	71.9
April	5 257.6	1 057.1	6 314.7	301.2	367.8	6 682.5	2 640.3	9 322.8	5.4	5.5	71.7
May	5 253.9	1 084.0	6 337.9	303.5	368.3	6 706.2	2 629.6	9 335.8	5.5	5.5	71.8
June	5 230.6	1 097.3	6 327.8	306.6	373.9	6 701.8	2 647.1	9 348.8	5.5	5.6	71.7
July	5 252.8	1 069.6	6 322.4	299.8	364.1	6 686.6	2 675.5	9 362.0	5.4	5.4	71.4
August	5 183.0	1 062.2	6 245.3	304.0	378.4	6 623.7	2 751.6	9 375.3	5.5	5.7	70.7
FEMALES											
August 2010	2 735.4	2 318.1	5 053.5	162.6	276.8	5 330.3	3 826.5	9 156.8	5.6	5.2	58.2
August 2011	2 778.8	2 387.7	5 166.4	168.4	278.7	5 445.1	3 858.6	9 303.7	5.7	5.1	58.5
2012											
August	2 803.4	2 424.2	5 227.7	170.6	266.6	5 494.3	3 967.3	9 461.6	5.7	4.9	58.1
September	2 956.5	2 386.7	5 343.2	183.3	294.5	5 637.8	3 837.4	9 475.1	5.8	5.2	59.5
October	2 851.7	2 434.0	5 285.7	179.9	290.9	5 576.6	3 911.2	9 487.8	5.9	5.2	58.8
November	2 877.1	2 410.7	5 287.8	177.3	269.8	5 557.6	3 942.8	9 500.4	5.8	4.9	58.5
December	2 903.9	2 425.2	5 329.1	191.9	296.8	5 625.9	3 887.2	9 513.1	6.2	5.3	59.1
2013											
January	2 857.8	2 367.1	5 224.9	207.0	315.9	5 540.8	3 989.1	9 529.9	6.8	5.7	58.1
February	2 884.8	2 412.6	5 297.4	215.9	349.5	5 646.9	3 900.0	9 546.9	7.0	6.2	59.1
March	2 840.6	2 479.2	5 319.7	206.1	339.3	5 659.0	3 904.8	9 563.8	6.8	6.0	59.2
April	2 856.2	2 488.4	5 344.6	202.3	325.2	5 669.8	3 906.3	9 576.1	6.6	5.7	59.2
May	2 874.1	2 464.2	5 338.4	205.8	317.0	5 655.3	3 933.1	9 588.4	6.7	5.6	59.0
June	2 855.0	2 488.6	5 343.5	206.1	310.0	5 653.6	3 947.1	9 600.7	6.7	5.5	58.9
July	2 878.9	2 453.4	5 332.3	191.0	294.7	5 627.0	3 987.2	9 614.1	6.2	5.2	58.5
August	2 844.3	2 443.5	5 287.7	191.6	312.0	5 599.7	4 027.9	9 627.7	6.3	5.6	58.2
PERSONS											
August 2010	7 808.1	3 328.9	11 137.1	394.4	570.6	11 707.7	6 355.2	18 062.9	4.8	4.9	64.8
August 2011	7 927.6	3 383.4	11 311.0	430.7	606.9	11 917.9	6 430.5	18 348.3	5.2	5.1	65.0
2012											
August	8 000.3	3 426.4	11 426.7	450.6	600.9	12 027.5	6 640.9	18 668.5	5.3	5.0	64.4
September	8 241.5	3 376.7	11 618.3	483.1	673.1	12 291.3	6 404.7	18 696.0	5.5	5.5	65.7
October	8 115.6	3 454.4	11 570.0	461.0	632.7	12 202.7	6 518.2	18 720.9	5.4	5.2	65.2
November	8 152.0	3 396.9	11 548.9	442.3	599.2	12 148.1	6 597.8	18 745.9	5.1	4.9	64.8
December	8 243.9	3 447.9	11 691.7	467.0	646.6	12 338.3	6 432.4	18 770.8	5.4	5.2	65.7
2013											
January	8 118.9	3 357.2	11 476.1	514.4	704.3	12 180.4	6 624.6	18 805.0	6.0	5.8	64.8
February	8 166.0	3 435.8	11 601.9	526.7	749.4	12 351.3	6 488.1	18 839.3	6.1	6.1	65.6
March	8 086.4	3 526.6	11 612.9	522.5	735.5	12 348.4	6 525.1	18 873.6	6.1	6.0	65.4
April	8 113.8	3 545.5	11 659.3	503.5	693.0	12 352.3	6 546.5	18 898.9	5.8	5.6	65.4
May	8 128.0	3 548.3	11 676.3	509.3	685.3	12 361.6	6 562.7	18 924.2	5.9	5.5	65.3
June	8 085.5	3 585.9	11 671.4	512.7	684.0	12 355.4	6 594.2	18 949.6	6.0	5.5	65.2
July	8 131.7	3 523.0	11 654.7	490.8	658.8	12 313.5	6 662.7	18 976.2	5.7	5.4	64.9
August	8 027.3	3 505.7	11 533.0	495.6	690.4	12 223.4	6 779.5	19 002.9	5.8	5.6	64.3



LABOUR FORCE STATUS (AGED 15 YEARS & OVER)—New South Wales

	TREND					SEASONALLY ADJUSTED					Civilian population aged 15 years and over '000
	Employed full time	Total employed	Total unemployed	Unemployment rate	Participation rate	Employed full time	Total employed	Total unemployed	Unemployment rate	Participation rate	
	'000	'000	'000	%	%	'000	'000	'000	%	%	
MALES											
August 2010	1 612.0	1 933.3	102.9	5.1	70.8	1 614.5	1 938.1	94.4	4.6	70.7	2 876.1
August 2011	1 627.4	1 947.2	104.9	5.1	70.5	1 628.2	1 944.6	110.5	5.4	70.6	2 910.4
2012											
August	1 637.7	1 960.0	110.5	5.3	70.2	1 632.4	1 957.0	101.6	4.9	69.8	2 947.9
September	1 643.6	1 963.0	110.9	5.3	70.3	1 642.2	1 960.3	119.3	5.7	70.5	2 951.1
October	1 648.5	1 967.3	110.4	5.3	70.3	1 663.7	1 976.4	107.7	5.2	70.5	2 954.3
November	1 651.8	1 972.8	109.7	5.3	70.4	1 650.3	1 969.1	112.3	5.4	70.4	2 957.5
December	1 653.7	1 978.8	109.4	5.2	70.5	1 649.8	1 975.9	104.6	5.0	70.3	2 960.7
2013											
January	1 653.9	1 984.3	110.2	5.3	70.6	1 655.6	1 985.2	106.8	5.1	70.6	2 965.2
February	1 653.9	1 989.8	111.2	5.3	70.8	1 647.9	1 990.3	113.6	5.4	70.8	2 969.7
March	1 653.6	1 993.9	112.2	5.3	70.8	1 652.5	1 992.6	117.1	5.6	70.9	2 974.2
April	1 653.1	1 995.8	113.2	5.4	70.9	1 661.3	1 999.1	109.8	5.2	70.8	2 976.9
May	1 651.5	1 995.2	113.8	5.4	70.8	1 650.8	1 998.2	118.1	5.6	71.0	2 979.5
June	1 648.9	1 992.9	114.5	5.4	70.7	1 648.9	1 995.3	109.0	5.2	70.6	2 982.2
July	1 645.9	1 989.4	115.3	5.5	70.5	1 646.7	1 993.2	112.5	5.3	70.5	2 985.4
August	1 643.2	1 985.5	115.9	5.5	70.3	1 636.7	1 971.5	122.0	5.8	70.0	2 988.7
FEMALES											
August 2010	891.5	1 595.8	90.3	5.4	56.5	894.5	1 593.4	88.0	5.2	56.3	2 986.2
August 2011	894.7	1 633.2	95.7	5.5	57.2	891.3	1 640.8	93.1	5.4	57.3	3 025.1
2012											
August	920.7	1 655.6	84.0	4.8	56.8	908.7	1 651.9	76.0	4.4	56.4	3 063.6
September	920.1	1 658.7	84.0	4.8	56.8	935.1	1 669.8	83.7	4.8	57.2	3 066.7
October	919.6	1 661.1	84.6	4.8	56.9	916.4	1 663.2	92.4	5.3	57.2	3 070.0
November	920.0	1 663.1	86.2	4.9	56.9	919.0	1 656.1	81.5	4.7	56.5	3 073.3
December	922.2	1 666.1	88.2	5.0	57.0	915.4	1 657.9	90.3	5.2	56.8	3 076.6
2013											
January	926.3	1 670.5	90.3	5.1	57.1	925.1	1 677.3	89.0	5.0	57.3	3 081.2
February	931.2	1 675.5	92.4	5.2	57.3	933.0	1 675.9	91.1	5.2	57.3	3 085.8
March	935.3	1 680.1	94.9	5.3	57.5	934.2	1 677.1	96.3	5.4	57.4	3 090.4
April	937.5	1 683.5	97.9	5.5	57.6	945.9	1 689.8	98.8	5.5	57.8	3 093.2
May	937.6	1 685.5	100.7	5.6	57.7	942.5	1 688.2	100.3	5.6	57.8	3 096.1
June	936.6	1 687.1	103.5	5.8	57.8	933.8	1 685.6	101.3	5.7	57.7	3 098.9
July	935.3	1 688.5	106.0	5.9	57.8	922.1	1 677.1	108.4	6.1	57.6	3 102.3
August	933.9	1 690.2	108.1	6.0	57.9	941.0	1 699.5	108.9	6.0	58.2	3 105.6
PERSONS											
August 2010	2 503.5	3 529.1	193.2	5.2	63.5	2 509.0	3 531.5	182.4	4.9	63.4	5 862.3
August 2011	2 522.1	3 580.4	200.6	5.3	63.7	2 519.4	3 585.4	203.6	5.4	63.8	5 935.5
2012											
August	2 558.4	3 615.6	194.5	5.1	63.4	2 541.0	3 608.9	177.5	4.7	63.0	6 011.5
September	2 563.7	3 621.6	194.9	5.1	63.4	2 577.3	3 630.1	203.0	5.3	63.7	6 017.7
October	2 568.1	3 628.4	195.0	5.1	63.5	2 580.1	3 639.6	200.2	5.2	63.7	6 024.2
November	2 571.8	3 635.9	195.8	5.1	63.5	2 569.3	3 625.2	193.8	5.1	63.3	6 030.8
December	2 575.8	3 644.9	197.7	5.1	63.6	2 565.3	3 633.8	194.9	5.1	63.4	6 037.3
2013											
January	2 580.2	3 654.9	200.5	5.2	63.8	2 580.7	3 662.5	195.8	5.1	63.8	6 046.4
February	2 585.0	3 665.3	203.6	5.3	63.9	2 580.9	3 666.2	204.7	5.3	63.9	6 055.6
March	2 588.9	3 674.0	207.1	5.3	64.0	2 586.8	3 669.8	213.4	5.5	64.0	6 064.7
April	2 590.7	3 679.3	211.0	5.4	64.1	2 607.2	3 688.9	208.6	5.4	64.2	6 070.1
May	2 589.1	3 680.7	214.6	5.5	64.1	2 593.3	3 686.4	218.3	5.6	64.3	6 075.6
June	2 585.5	3 679.9	217.9	5.6	64.1	2 582.8	3 680.8	210.4	5.4	64.0	6 081.1
July	2 581.2	3 677.9	221.3	5.7	64.1	2 568.7	3 670.3	220.9	5.7	63.9	6 087.7
August	2 577.2	3 675.7	224.0	5.7	64.0	2 577.7	3 671.0	231.0	5.9	64.0	6 094.3

LABOUR FORCE STATUS (AGED 15 YEARS & OVER)—Victoria

	TREND					SEASONALLY ADJUSTED					Civilian population aged 15 years and over
	Employed full time	Total employed	Total unemployed	Unemployment rate	Participation rate	Employed full time	Total employed	Total unemployed	Unemployment rate	Participation rate	
	'000	'000	'000	%	%	'000	'000	'000	%	%	
MALES											
August 2010	1 265.4	1 536.5	85.2	5.3	72.9	1 264.1	1 539.1	83.8	5.2	73.0	2 224.4
August 2011	1 296.3	1 561.8	80.7	4.9	72.8	1 299.3	1 560.5	78.6	4.8	72.6	2 257.3
2012											
August	1 286.1	1 554.1	87.3	5.3	71.5	1 280.4	1 543.3	92.7	5.7	71.3	2 295.7
September	1 286.9	1 554.7	88.5	5.4	71.5	1 283.5	1 550.0	92.4	5.6	71.4	2 299.2
October	1 287.5	1 556.5	89.3	5.4	71.5	1 288.3	1 568.4	82.0	5.0	71.7	2 302.1
November	1 288.1	1 559.0	89.9	5.5	71.5	1 294.0	1 553.6	88.5	5.4	71.2	2 305.0
December	1 288.8	1 560.9	90.5	5.5	71.5	1 292.4	1 567.0	88.3	5.3	71.7	2 308.0
2013											
January	1 289.6	1 562.3	91.0	5.5	71.5	1 287.1	1 558.9	103.7	6.2	71.9	2 312.3
February	1 290.1	1 563.6	91.7	5.5	71.5	1 276.5	1 564.3	83.5	5.1	71.1	2 316.6
March	1 290.7	1 565.5	92.4	5.6	71.5	1 301.8	1 563.5	92.6	5.6	71.4	2 320.9
April	1 291.7	1 568.2	93.1	5.6	71.5	1 293.3	1 563.0	94.8	5.7	71.3	2 323.7
May	1 293.0	1 571.0	94.0	5.6	71.6	1 293.1	1 575.5	87.9	5.3	71.5	2 326.6
June	1 294.0	1 573.4	95.3	5.7	71.6	1 290.7	1 578.9	101.4	6.0	72.1	2 329.4
July	1 294.9	1 575.3	96.4	5.8	71.7	1 291.9	1 572.9	96.5	5.8	71.6	2 332.7
August	1 295.9	1 576.3	98.2	5.9	71.7	1 299.8	1 574.0	96.8	5.8	71.5	2 335.9
FEMALES											
August 2010	673.4	1 270.9	76.0	5.6	58.5	675.7	1 276.2	78.6	5.8	58.8	2 302.8
August 2011	694.8	1 304.4	75.9	5.5	59.0	697.0	1 300.1	76.8	5.6	58.8	2 341.0
2012											
August	695.4	1 333.1	80.1	5.7	59.4	696.8	1 332.0	77.0	5.5	59.2	2 380.4
September	694.9	1 330.9	79.8	5.7	59.2	694.5	1 335.3	79.2	5.6	59.3	2 383.8
October	693.0	1 329.0	80.2	5.7	59.0	701.0	1 325.1	82.6	5.9	59.0	2 386.9
November	690.7	1 327.7	81.1	5.8	58.9	684.8	1 327.1	79.9	5.7	58.9	2 390.0
December	689.1	1 327.1	82.0	5.8	58.9	687.7	1 327.1	82.5	5.9	58.9	2 393.1
2013											
January	688.4	1 327.5	82.6	5.9	58.8	685.9	1 325.4	82.8	5.9	58.7	2 397.5
February	688.9	1 329.4	82.5	5.8	58.8	690.9	1 334.3	83.2	5.9	59.0	2 401.9
March	690.0	1 332.1	81.9	5.8	58.8	685.7	1 326.6	80.8	5.7	58.5	2 406.3
April	690.7	1 334.9	81.1	5.7	58.8	697.2	1 336.4	83.9	5.9	59.0	2 409.1
May	690.2	1 337.3	80.3	5.7	58.8	692.0	1 335.2	78.2	5.5	58.6	2 411.9
June	688.8	1 339.1	79.7	5.6	58.7	687.4	1 346.8	78.8	5.5	59.0	2 414.7
July	687.1	1 340.2	79.3	5.6	58.7	686.8	1 339.5	79.3	5.6	58.7	2 418.1
August	685.2	1 340.6	79.0	5.6	58.7	681.6	1 336.3	80.1	5.7	58.5	2 421.5
PERSONS											
August 2010	1 938.8	2 807.5	161.1	5.4	65.6	1 939.9	2 815.3	162.5	5.5	65.8	4 527.2
August 2011	1 991.1	2 866.2	156.6	5.2	65.7	1 996.3	2 860.7	155.4	5.2	65.6	4 598.4
2012											
August	1 981.5	2 887.2	167.4	5.5	65.3	1 977.2	2 875.3	169.7	5.6	65.1	4 676.1
September	1 981.8	2 885.6	168.3	5.5	65.2	1 978.0	2 885.3	171.5	5.6	65.3	4 683.0
October	1 980.6	2 885.5	169.5	5.5	65.2	1 989.3	2 893.5	164.6	5.4	65.2	4 689.1
November	1 978.9	2 886.7	171.0	5.6	65.1	1 978.7	2 880.6	168.4	5.5	64.9	4 695.1
December	1 977.9	2 888.0	172.5	5.6	65.1	1 980.1	2 894.1	170.8	5.6	65.2	4 701.1
2013											
January	1 978.1	2 889.8	173.6	5.7	65.0	1 973.0	2 884.3	186.6	6.1	65.2	4 709.8
February	1 979.0	2 893.0	174.2	5.7	65.0	1 967.4	2 898.6	166.6	5.4	65.0	4 718.5
March	1 980.7	2 897.6	174.3	5.7	65.0	1 987.6	2 890.1	173.4	5.7	64.8	4 727.2
April	1 982.4	2 903.2	174.2	5.7	65.0	1 990.6	2 899.4	178.7	5.8	65.0	4 732.9
May	1 983.1	2 908.3	174.3	5.7	65.0	1 985.1	2 910.8	166.1	5.4	64.9	4 738.5
June	1 982.8	2 912.4	175.0	5.7	65.1	1 978.1	2 925.7	180.1	5.8	65.5	4 744.2
July	1 982.1	2 915.5	175.6	5.7	65.1	1 978.8	2 912.3	175.8	5.7	65.0	4 750.8
August	1 981.1	2 916.9	177.1	5.7	65.1	1 981.4	2 910.3	176.9	5.7	64.9	4 757.5

LABOUR FORCE STATUS (AGED 15 YEARS & OVER)—Queensland

	TREND					SEASONALLY ADJUSTED					Civilian population aged 15 years and over
	Employed full time	Total employed	Total unemp-loyed	Unemp-loyment rate	Partici-pation rate	Employed full time	Total employed	Total unemp-loyed	Unemp-loyment rate	Partici-pation rate	
	'000	'000	'000	%	%	'000	'000	'000	%	%	
MALES											
August 2010	1 056.7	1 246.3	67.0	5.1	73.7	1 044.5	1 233.8	67.1	5.2	73.0	1 782.2
August 2011	1 064.3	1 257.0	73.8	5.5	73.4	1 061.8	1 253.7	82.1	6.1	73.7	1 813.5
2012											
August	1 083.3	1 273.6	79.0	5.8	73.1	1 090.7	1 285.0	80.8	5.9	73.8	1 850.6
September	1 083.4	1 272.2	81.6	6.0	73.0	1 077.5	1 267.2	84.7	6.3	72.9	1 853.9
October	1 083.3	1 271.0	83.1	6.1	72.9	1 078.5	1 259.8	85.0	6.3	72.4	1 856.5
November	1 082.9	1 270.1	83.5	6.2	72.8	1 085.9	1 276.1	82.1	6.0	73.1	1 859.2
December	1 082.1	1 269.6	82.7	6.1	72.6	1 081.7	1 269.0	84.3	6.2	72.7	1 861.9
2013											
January	1 080.7	1 269.3	81.5	6.0	72.4	1 084.0	1 271.6	77.7	5.8	72.3	1 865.4
February	1 079.0	1 268.9	81.0	6.0	72.2	1 081.5	1 272.6	81.7	6.0	72.5	1 869.0
March	1 076.9	1 268.2	81.5	6.0	72.1	1 072.8	1 262.8	83.8	6.2	71.9	1 872.6
April	1 074.8	1 267.6	82.8	6.1	72.0	1 072.4	1 267.6	79.4	5.9	71.8	1 875.9
May	1 073.5	1 267.9	84.3	6.2	72.0	1 073.7	1 268.8	80.8	6.0	71.8	1 879.1
June	1 072.5	1 268.8	85.7	6.3	72.0	1 071.8	1 264.5	92.1	6.8	72.1	1 882.4
July	1 071.6	1 269.8	86.9	6.4	72.0	1 078.2	1 274.6	88.0	6.5	72.3	1 885.3
August	1 071.0	1 271.0	87.5	6.4	72.0	1 066.3	1 271.6	84.8	6.2	71.8	1 888.3
FEMALES											
August 2010	579.4	1 055.1	63.6	5.7	61.4	581.0	1 050.1	61.0	5.5	61.0	1 820.5
August 2011	603.5	1 078.1	64.6	5.7	61.6	602.5	1 076.6	71.5	6.2	61.9	1 854.0
2012											
August	598.3	1 064.6	68.7	6.1	59.9	598.4	1 065.9	69.2	6.1	60.0	1 892.3
September	598.7	1 065.5	69.2	6.1	59.9	602.5	1 063.4	70.5	6.2	59.8	1 895.7
October	600.3	1 068.4	68.8	6.1	59.9	600.7	1 066.7	66.8	5.9	59.7	1 898.7
November	601.5	1 072.6	67.6	5.9	60.0	601.8	1 077.4	68.9	6.0	60.3	1 901.8
December	601.2	1 077.3	66.1	5.8	60.0	592.5	1 061.3	68.0	6.0	59.3	1 904.8
2013											
January	599.3	1 081.4	64.7	5.7	60.1	614.5	1 102.2	61.6	5.3	61.0	1 908.4
February	597.2	1 084.2	63.9	5.6	60.0	598.6	1 079.7	64.6	5.6	59.8	1 912.0
March	596.2	1 085.6	63.6	5.5	60.0	587.9	1 084.1	62.8	5.5	59.9	1 915.6
April	596.9	1 086.1	63.7	5.5	59.9	592.5	1 085.9	62.6	5.5	59.9	1 918.8
May	599.5	1 086.4	64.0	5.6	59.9	597.4	1 087.0	64.8	5.6	59.9	1 922.1
June	603.3	1 087.0	64.2	5.6	59.8	604.9	1 083.1	67.4	5.9	59.8	1 925.3
July	607.3	1 087.5	64.4	5.6	59.7	613.2	1 091.5	61.2	5.3	59.8	1 928.5
August	612.1	1 089.5	64.3	5.6	59.8	613.9	1 089.4	65.0	5.6	59.8	1 931.8
PERSONS											
August 2010	1 636.2	2 301.3	130.5	5.4	67.5	1 625.5	2 283.9	128.1	5.3	66.9	3 602.8
August 2011	1 667.8	2 335.1	138.5	5.6	67.4	1 664.3	2 330.4	153.6	6.2	67.7	3 667.5
2012											
August	1 681.6	2 338.2	147.7	5.9	66.4	1 689.1	2 350.9	150.0	6.0	66.8	3 742.9
September	1 682.1	2 337.6	150.8	6.1	66.4	1 680.0	2 330.6	155.3	6.2	66.3	3 749.6
October	1 683.6	2 339.4	151.9	6.1	66.3	1 679.2	2 326.6	151.8	6.1	66.0	3 755.2
November	1 684.3	2 342.7	151.1	6.1	66.3	1 687.7	2 353.5	151.0	6.0	66.6	3 761.0
December	1 683.3	2 346.9	148.8	6.0	66.2	1 674.2	2 330.3	152.3	6.1	65.9	3 766.7
2013											
January	1 680.1	2 350.7	146.2	5.9	66.2	1 698.4	2 373.8	139.3	5.5	66.6	3 773.8
February	1 676.2	2 353.1	144.9	5.8	66.1	1 680.1	2 352.3	146.3	5.9	66.1	3 781.1
March	1 673.0	2 353.9	145.1	5.8	66.0	1 660.7	2 346.9	146.5	5.9	65.8	3 788.2
April	1 671.8	2 353.7	146.5	5.9	65.9	1 664.8	2 353.5	142.0	5.7	65.8	3 794.7
May	1 673.0	2 354.3	148.3	5.9	65.8	1 671.1	2 355.9	145.6	5.8	65.8	3 801.2
June	1 675.8	2 355.8	149.9	6.0	65.8	1 676.7	2 347.6	159.6	6.4	65.8	3 807.7
July	1 678.9	2 357.3	151.3	6.0	65.8	1 691.3	2 366.1	149.2	5.9	66.0	3 813.8
August	1 683.1	2 360.4	151.9	6.0	65.8	1 680.2	2 361.0	149.7	6.0	65.7	3 820.0

	TREND					SEASONALLY ADJUSTED					Civilian population aged 15 years and over
	Employed full time	Total employed	Total unemployed	Unemployment rate	Participation rate	Employed full time	Total employed	Total unemployed	Unemployment rate	Participation rate	
	'000	'000	'000	%	%	'000	'000	'000	%	%	
MALES											
August 2010	361.0	436.3	25.4	5.5	69.9	359.5	437.9	24.9	5.4	70.0	661.0
August 2011	362.3	441.7	25.3	5.4	70.0	362.7	440.7	24.7	5.3	69.8	666.8
2012											
August	354.8	435.9	27.1	5.9	68.7	353.2	433.7	28.6	6.2	68.6	673.7
September	355.3	435.7	27.0	5.8	68.6	354.3	433.0	27.0	5.9	68.2	674.2
October	356.1	436.0	27.0	5.8	68.6	356.0	436.2	27.3	5.9	68.7	674.7
November	356.6	436.4	27.1	5.8	68.6	359.3	438.0	24.1	5.2	68.4	675.1
December	356.6	436.7	27.4	5.9	68.7	358.1	439.2	29.0	6.2	69.3	675.6
2013											
January	356.5	437.3	27.5	5.9	68.7	357.5	438.6	28.1	6.0	69.0	676.4
February	356.9	438.3	27.5	5.9	68.8	354.3	434.2	28.6	6.2	68.3	677.2
March	357.6	439.3	27.7	5.9	68.9	351.6	435.0	27.9	6.0	68.3	678.0
April	358.1	440.1	28.1	6.0	69.0	358.7	441.5	25.9	5.5	68.9	678.7
May	358.1	440.5	28.8	6.1	69.1	366.7	447.5	28.3	6.0	70.0	679.3
June	357.2	440.2	29.8	6.3	69.1	358.8	442.4	28.8	6.1	69.3	679.9
July	355.7	439.2	31.0	6.6	69.1	353.5	434.7	34.0	7.3	68.9	680.4
August	353.9	438.2	32.0	6.8	69.1	347.4	434.5	32.0	6.9	68.5	680.8
FEMALES											
August 2010	189.8	375.5	20.9	5.3	57.5	191.4	377.1	21.2	5.3	57.8	689.0
August 2011	184.7	378.5	19.9	5.0	57.3	186.6	379.2	18.4	4.6	57.2	695.1
2012											
August	181.5	378.3	21.5	5.4	56.9	178.8	376.8	19.9	5.0	56.5	701.9
September	183.4	379.2	21.4	5.3	57.0	188.8	380.3	21.0	5.2	57.1	702.4
October	184.8	380.0	21.4	5.3	57.1	186.7	381.5	21.6	5.4	57.3	702.9
November	185.7	380.9	21.7	5.4	57.2	185.0	378.1	21.9	5.5	56.9	703.4
December	186.2	382.0	22.2	5.5	57.4	185.5	381.8	21.4	5.3	57.3	703.9
2013											
January	186.7	383.1	22.7	5.6	57.6	185.5	383.4	24.8	6.1	57.9	704.8
February	187.7	383.8	23.0	5.7	57.7	185.0	383.6	21.9	5.4	57.5	705.6
March	188.9	383.6	23.4	5.7	57.6	190.7	384.8	22.7	5.6	57.7	706.4
April	189.6	382.3	23.9	5.9	57.5	190.2	383.2	24.8	6.1	57.7	707.0
May	189.5	380.0	24.6	6.1	57.2	192.4	382.5	24.2	5.9	57.5	707.5
June	188.8	377.4	25.3	6.3	56.9	190.4	375.7	24.2	6.0	56.5	708.0
July	187.7	374.8	26.0	6.5	56.6	183.8	372.7	27.3	6.8	56.5	708.5
August	186.4	372.5	26.9	6.7	56.3	184.8	371.5	27.2	6.8	56.2	708.9
PERSONS											
August 2010	550.8	811.8	46.4	5.4	63.6	551.0	815.0	46.2	5.4	63.8	1 350.0
August 2011	547.0	820.2	45.2	5.2	63.5	549.2	819.9	43.0	5.0	63.4	1 361.9
2012											
August	536.3	814.2	48.6	5.6	62.7	532.0	810.5	48.4	5.6	62.4	1 375.6
September	538.7	814.8	48.3	5.6	62.7	543.1	813.3	47.9	5.6	62.6	1 376.5
October	541.0	816.0	48.4	5.6	62.7	542.7	817.8	48.9	5.6	62.9	1 377.6
November	542.3	817.3	48.8	5.6	62.8	544.3	816.1	46.0	5.3	62.5	1 378.6
December	542.8	818.7	49.6	5.7	62.9	543.6	821.0	50.5	5.8	63.2	1 379.6
2013											
January	543.3	820.4	50.2	5.8	63.0	543.0	822.1	52.9	6.1	63.4	1 381.2
February	544.6	822.1	50.6	5.8	63.1	539.3	817.7	50.5	5.8	62.8	1 382.8
March	546.4	822.9	51.1	5.8	63.1	542.3	819.9	50.6	5.8	62.9	1 384.5
April	547.7	822.4	52.0	5.9	63.1	548.9	824.7	50.7	5.8	63.2	1 385.6
May	547.6	820.5	53.4	6.1	63.0	559.1	830.0	52.5	6.0	63.6	1 386.8
June	546.0	817.5	55.1	6.3	62.9	549.2	818.2	53.0	6.1	62.8	1 388.0
July	543.3	814.0	57.0	6.5	62.7	537.4	807.4	61.3	7.1	62.5	1 388.8
August	540.3	810.7	58.8	6.8	62.6	532.2	806.0	59.2	6.8	62.3	1 389.7

	TREND					SEASONALLY ADJUSTED					Civilian population aged 15 years and over
	Employed full time	Total employed	Total unemployed	Unemployment rate	Participation rate	Employed full time	Total employed	Total unemployed	Unemployment rate	Participation rate	
	'000	'000	'000	%	%	'000	'000	'000	%	%	
MALES											
August 2010	583.9	685.7	27.4	3.8	76.3	586.5	687.1	26.1	3.7	76.3	935.0
August 2011	599.2	698.9	31.6	4.3	75.8	597.1	699.9	33.5	4.6	76.1	964.3
2012											
August	640.2	737.8	27.1	3.5	76.5	642.2	732.9	28.6	3.8	76.1	1 000.5
September	641.0	739.2	28.9	3.8	76.6	640.3	743.0	28.5	3.7	76.9	1 003.6
October	641.5	740.9	30.4	3.9	76.7	641.0	741.1	34.2	4.4	77.0	1 006.3
November	641.4	742.3	31.5	4.1	76.7	640.4	741.3	30.8	4.0	76.5	1 008.9
December	640.8	743.2	32.3	4.2	76.6	640.3	741.0	32.3	4.2	76.4	1 011.6
2013											
January	640.0	743.6	33.1	4.3	76.5	646.7	749.5	29.5	3.8	76.8	1 015.0
February	639.4	743.6	34.4	4.4	76.4	636.5	743.3	35.2	4.5	76.4	1 018.4
March	639.3	743.5	35.7	4.6	76.3	634.5	739.7	35.1	4.5	75.8	1 021.8
April	639.5	743.7	36.9	4.7	76.2	638.5	740.5	41.1	5.3	76.3	1 024.9
May	640.1	744.0	37.7	4.8	76.0	641.7	749.7	36.8	4.7	76.5	1 027.9
June	640.7	744.6	38.1	4.9	75.9	647.1	745.5	36.1	4.6	75.8	1 031.0
July	641.1	745.2	38.2	4.9	75.8	636.3	739.6	39.9	5.1	75.4	1 033.9
August	641.8	746.2	38.0	4.8	75.7	641.3	749.7	36.8	4.7	75.9	1 036.8
FEMALES											
August 2010	274.7	528.5	28.6	5.1	60.8	278.0	527.2	30.7	5.5	60.9	916.7
August 2011	290.2	548.8	23.8	4.2	60.8	286.1	545.1	23.6	4.2	60.4	941.7
2012											
August	308.0	570.8	27.0	4.5	61.5	303.7	572.8	25.8	4.3	61.6	972.1
September	310.1	573.8	27.3	4.5	61.7	312.8	574.1	26.8	4.5	61.6	974.8
October	312.1	576.8	27.5	4.6	61.8	312.3	576.0	31.2	5.1	62.1	977.2
November	313.2	579.1	27.6	4.6	61.9	315.5	581.0	26.2	4.3	62.0	979.6
December	312.9	580.1	27.9	4.6	61.9	316.2	581.1	28.0	4.6	62.0	982.0
2013											
January	311.4	579.4	28.6	4.7	61.7	309.0	581.2	26.7	4.4	61.7	984.7
February	309.2	578.1	29.1	4.8	61.5	306.7	576.5	28.5	4.7	61.3	987.5
March	307.7	576.6	29.6	4.9	61.2	309.2	575.4	30.2	5.0	61.2	990.2
April	307.1	575.3	29.8	4.9	61.0	306.2	576.7	32.2	5.3	61.3	992.8
May	307.4	574.3	29.6	4.9	60.7	305.2	569.4	31.5	5.2	60.4	995.3
June	308.2	573.5	29.3	4.9	60.4	308.8	576.7	27.7	4.6	60.6	997.8
July	309.1	572.7	29.0	4.8	60.2	309.9	576.9	23.4	3.9	60.0	1 000.5
August	310.1	572.0	28.8	4.8	60.0	311.6	567.3	33.2	5.5	59.9	1 003.1
PERSONS											
August 2010	858.6	1 214.2	56.0	4.4	68.6	864.5	1 214.3	56.8	4.5	68.6	1 851.7
August 2011	889.4	1 247.8	55.4	4.2	68.4	883.3	1 245.1	57.1	4.4	68.3	1 906.0
2012											
August	948.2	1 308.6	54.1	4.0	69.1	945.9	1 305.7	54.4	4.0	69.0	1 972.6
September	951.1	1 313.0	56.3	4.1	69.2	953.1	1 317.1	55.3	4.0	69.4	1 978.5
October	953.5	1 317.7	57.9	4.2	69.4	953.4	1 317.1	65.4	4.7	69.7	1 983.5
November	954.6	1 321.4	59.1	4.3	69.4	955.9	1 322.2	57.0	4.1	69.4	1 988.6
December	953.7	1 323.2	60.2	4.4	69.4	956.5	1 322.1	60.3	4.4	69.3	1 993.6
2013											
January	951.4	1 323.0	61.7	4.5	69.2	955.7	1 330.7	56.2	4.1	69.4	1 999.7
February	948.7	1 321.7	63.5	4.6	69.1	943.2	1 319.8	63.7	4.6	69.0	2 005.9
March	946.9	1 320.1	65.3	4.7	68.9	943.7	1 315.1	65.2	4.7	68.6	2 012.0
April	946.6	1 319.0	66.7	4.8	68.7	944.7	1 317.2	73.3	5.3	68.9	2 017.6
May	947.5	1 318.3	67.3	4.9	68.5	946.9	1 319.1	68.3	4.9	68.6	2 023.2
June	948.9	1 318.1	67.4	4.9	68.3	955.9	1 322.2	63.8	4.6	68.3	2 028.8
July	950.2	1 317.9	67.3	4.9	68.1	946.2	1 316.6	63.3	4.6	67.8	2 034.4
August	951.8	1 318.2	66.8	4.8	68.0	952.9	1 317.0	70.0	5.0	68.0	2 039.9

LABOUR FORCE STATUS (AGED 15 YEARS & OVER)—Tasmania

	TREND					SEASONALLY ADJUSTED					Civilian population aged 15 years and over '000
	Employed full time	Total employed	Total unemployed	Unemployment rate	Participation rate	Employed full time	Total employed	Total unemployed	Unemployment rate	Participation rate	
	'000	'000	'000	%	%	'000	'000	'000	%	%	
MALES											
August 2010	100.0	124.5	8.2	6.2	66.3	100.3	125.5	8.0	6.0	66.7	200.1
August 2011	102.2	125.2	7.2	5.5	65.7	102.6	125.0	7.4	5.6	65.7	201.5
2012											
August	98.6	124.4	9.3	7.0	66.1	99.6	125.0	9.2	6.8	66.3	202.3
September	98.9	124.9	9.3	6.9	66.3	98.3	125.0	10.0	7.4	66.7	202.4
October	98.9	125.0	9.3	6.9	66.3	100.8	127.0	8.7	6.4	67.0	202.5
November	98.8	124.8	9.4	7.0	66.3	98.4	124.1	8.6	6.5	65.6	202.5
December	98.5	124.5	9.4	7.0	66.1	95.8	123.5	10.1	7.6	66.0	202.6
2013											
January	98.2	124.2	9.4	7.0	65.9	100.3	123.5	10.3	7.7	65.9	202.8
February	98.0	124.0	9.4	7.0	65.7	98.1	124.7	8.9	6.7	65.8	203.0
March	97.8	123.9	9.4	7.1	65.6	97.5	123.9	9.5	7.1	65.6	203.2
April	97.5	123.6	9.7	7.3	65.6	96.6	124.1	8.8	6.6	65.4	203.3
May	97.1	123.0	10.1	7.6	65.5	98.2	123.7	9.8	7.4	65.7	203.3
June	96.6	122.2	10.6	8.0	65.3	96.3	121.6	11.4	8.6	65.4	203.4
July	96.0	121.4	11.2	8.5	65.2	96.7	121.9	11.0	8.3	65.3	203.4
August	95.6	120.7	11.8	8.9	65.1	94.3	119.4	12.4	9.4	64.8	203.5
FEMALES											
August 2010	53.5	112.6	6.6	5.5	56.8	53.8	112.8	7.5	6.3	57.3	209.9
August 2011	52.2	111.1	5.6	4.8	55.2	50.4	111.1	5.7	4.9	55.3	211.4
2012											
August	48.9	108.5	7.9	6.8	54.9	48.7	108.5	8.0	6.9	55.0	211.8
September	48.6	108.2	8.0	6.9	54.8	48.3	107.6	8.3	7.2	54.7	211.9
October	48.6	108.1	8.1	7.0	54.8	48.2	108.4	8.3	7.2	55.1	211.9
November	48.8	108.1	8.2	7.1	54.9	49.2	107.8	8.1	7.0	54.7	211.9
December	48.8	108.1	8.3	7.1	54.9	48.4	107.9	8.2	7.1	54.8	211.9
2013											
January	48.7	108.0	8.4	7.2	54.9	49.4	107.8	8.8	7.6	55.0	212.1
February	48.4	107.9	8.7	7.4	54.9	49.3	110.1	7.8	6.6	55.5	212.3
March	48.1	107.8	9.1	7.8	55.0	47.7	107.1	8.8	7.6	54.5	212.6
April	48.0	107.8	9.5	8.1	55.2	46.4	105.6	10.2	8.8	54.5	212.5
May	48.2	108.0	9.7	8.3	55.4	47.9	108.8	9.1	7.7	55.5	212.5
June	48.5	108.3	9.8	8.3	55.6	49.2	108.7	11.6	9.6	56.6	212.5
July	49.0	108.7	9.8	8.3	55.8	49.2	108.5	9.6	8.1	55.5	212.6
August	49.4	109.1	9.7	8.2	55.9	50.0	109.9	8.3	7.0	55.6	212.6
PERSONS											
August 2010	153.4	237.0	14.9	5.9	61.4	154.1	238.3	15.5	6.1	61.9	410.0
August 2011	154.4	236.3	12.9	5.2	60.3	153.0	236.1	13.1	5.3	60.4	412.9
2012											
August	147.5	232.9	17.2	6.9	60.4	148.3	233.5	17.2	6.8	60.5	414.2
September	147.5	233.1	17.3	6.9	60.4	146.6	232.6	18.4	7.3	60.6	414.3
October	147.5	233.1	17.4	7.0	60.5	149.0	235.3	17.0	6.7	60.9	414.3
November	147.5	232.9	17.6	7.0	60.4	147.6	232.0	16.8	6.7	60.0	414.4
December	147.3	232.6	17.7	7.1	60.3	144.3	231.4	18.3	7.3	60.2	414.5
2013											
January	146.9	232.2	17.8	7.1	60.2	149.7	231.3	19.1	7.6	60.3	414.9
February	146.4	231.9	18.0	7.2	60.2	147.4	234.7	16.7	6.6	60.5	415.4
March	145.9	231.7	18.5	7.4	60.2	145.3	231.0	18.3	7.3	60.0	415.8
April	145.5	231.4	19.2	7.6	60.3	143.0	229.7	19.0	7.6	59.8	415.8
May	145.2	231.0	19.8	7.9	60.3	146.1	232.5	18.9	7.5	60.4	415.9
June	145.1	230.6	20.5	8.2	60.4	145.5	230.2	22.9	9.1	60.9	415.9
July	144.9	230.2	21.0	8.4	60.4	145.9	230.4	20.6	8.2	60.3	416.0
August	145.0	229.7	21.5	8.6	60.4	144.3	229.4	20.7	8.3	60.1	416.1

	TREND					<i>Civilian population aged 15 years and over</i>
	<i>Employed full time</i>	<i>Total employed</i>	<i>Total unemployed</i>	<i>Unemployment rate</i>	<i>Participation rate</i>	
	'000	'000	'000	%	%	
MALES						
August 2010	57.7	65.5	1.9	2.8	78.2	86.3
August 2011	56.4	64.2	2.8	4.1	76.6	87.3
2012						
August	59.4	66.8	2.8	4.0	77.7	89.5
September	59.7	67.2	2.8	4.0	78.0	89.8
October	59.8	67.6	2.7	3.9	78.3	89.8
November	59.7	67.8	2.7	3.9	78.4	89.9
December	59.4	67.7	2.7	3.9	78.3	89.9
2013						
January	59.0	67.5	2.8	4.0	78.0	90.1
February	58.7	67.3	3.0	4.2	77.9	90.3
March	58.7	67.3	3.2	4.5	77.8	90.5
April	59.0	67.5	3.3	4.7	78.1	90.7
May	59.5	67.9	3.5	4.9	78.4	91.0
June	60.0	68.3	3.6	5.0	78.8	91.3
July	60.5	68.7	3.7	5.1	79.2	91.4
August	60.8	69.0	3.8	5.2	79.5	91.6
FEMALES						
August 2010	40.4	56.3	1.7	2.9	68.8	84.3
August 2011	41.0	56.1	2.3	3.9	68.5	85.3
2012						
August	43.0	58.7	2.5	4.1	70.5	86.8
September	43.3	59.0	2.5	4.1	70.7	87.0
October	43.4	59.0	2.5	4.0	70.6	87.1
November	43.3	58.7	2.5	4.0	70.2	87.1
December	42.9	58.3	2.5	4.1	69.7	87.2
2013						
January	42.5	57.9	2.5	4.2	69.3	87.3
February	42.0	57.7	2.7	4.4	69.0	87.5
March	41.7	57.6	2.9	4.7	69.0	87.6
April	41.5	57.7	3.1	5.1	69.3	87.8
May	41.5	58.0	3.3	5.3	69.6	88.0
June	41.6	58.3	3.4	5.5	70.0	88.2
July	41.8	58.6	3.5	5.7	70.4	88.3
August	41.9	58.9	3.6	5.8	70.7	88.4
PERSONS						
August 2010	98.1	121.9	3.6	2.9	73.6	170.6
August 2011	97.5	120.3	5.0	4.0	72.6	172.6
2012						
August	102.5	125.5	5.3	4.0	74.2	176.3
September	103.0	126.2	5.3	4.0	74.4	176.8
October	103.2	126.6	5.2	4.0	74.5	176.9
November	102.9	126.5	5.2	3.9	74.4	177.0
December	102.3	126.0	5.2	4.0	74.1	177.1
2013						
January	101.4	125.4	5.3	4.1	73.7	177.4
February	100.7	125.0	5.6	4.3	73.5	177.8
March	100.4	125.0	6.0	4.6	73.5	178.1
April	100.5	125.3	6.4	4.9	73.7	178.6
May	101.0	125.9	6.8	5.1	74.1	179.0
June	101.6	126.7	7.0	5.3	74.5	179.5
July	102.2	127.3	7.3	5.4	74.9	179.8
August	102.8	127.9	7.4	5.5	75.2	180.0

	TREND					Civilian population aged 15 years and over
	Employed full time	Total employed	Total unemployed	Unemployment rate	Participation rate	
	'000	'000	'000	%	%	
MALES						
August 2010	88.8	104.6	3.3	3.0	76.5	141.0
August 2011	89.4	106.0	4.7	4.3	77.2	143.5
2012						
August	90.1	106.9	4.9	4.3	76.2	146.6
September	89.9	106.9	5.0	4.5	76.3	146.8
October	89.6	107.1	5.1	4.6	76.3	147.0
November	89.2	107.1	5.3	4.7	76.3	147.3
December	89.0	107.2	5.5	4.8	76.3	147.5
2013						
January	89.0	107.4	5.5	4.9	76.3	147.8
February	89.2	107.8	5.4	4.8	76.4	148.2
March	89.6	108.4	5.2	4.5	76.5	148.5
April	90.1	109.0	4.8	4.3	76.5	148.7
May	90.5	109.6	4.5	4.0	76.6	149.0
June	91.0	110.0	4.3	3.8	76.6	149.2
July	91.3	110.3	4.2	3.7	76.6	149.5
August	91.6	110.5	4.2	3.7	76.7	149.8
FEMALES						
August 2010	62.1	99.0	3.3	3.2	69.5	147.3
August 2011	64.4	98.0	3.8	3.7	67.9	150.0
2012						
August	66.3	102.0	3.6	3.4	69.1	152.7
September	66.7	101.9	3.7	3.5	69.1	152.9
October	66.8	101.8	4.0	3.7	69.1	153.1
November	66.8	101.8	4.1	3.9	69.1	153.3
December	66.7	101.8	4.3	4.1	69.1	153.5
2013						
January	66.4	101.8	4.4	4.1	69.0	153.9
February	65.9	101.8	4.4	4.1	68.9	154.2
March	65.3	101.6	4.4	4.1	68.6	154.6
April	64.7	101.4	4.3	4.0	68.3	154.8
May	64.2	101.0	4.1	3.9	67.9	154.9
June	63.8	100.7	4.0	3.8	67.5	155.1
July	63.4	100.3	3.9	3.7	67.0	155.4
August	63.2	100.0	3.8	3.7	66.7	155.7
PERSONS						
August 2010	150.9	203.6	6.6	3.1	72.9	288.3
August 2011	153.9	204.0	8.5	4.0	72.4	293.5
2012						
August	156.4	208.8	8.4	3.9	72.6	299.2
September	156.5	208.8	8.7	4.0	72.6	299.6
October	156.4	208.9	9.1	4.2	72.6	300.1
November	156.1	208.9	9.4	4.3	72.6	300.5
December	155.7	209.0	9.8	4.5	72.6	301.0
2013						
January	155.4	209.2	9.9	4.5	72.6	301.7
February	155.1	209.6	9.8	4.5	72.6	302.4
March	154.9	210.0	9.5	4.3	72.5	303.1
April	154.8	210.4	9.1	4.1	72.3	303.5
May	154.7	210.6	8.7	4.0	72.1	303.9
June	154.7	210.7	8.4	3.8	72.0	304.3
July	154.7	210.6	8.1	3.7	71.8	304.9
August	154.8	210.5	8.0	3.7	71.6	305.5



	EMPLOYED			UNEMPLOYED		Labour force	Not in labour force	Civilian population aged 15 years and over	UNEMPLOYMENT RATE		Participation rate
	Full time	Part time	Total	Looking for f/t work	Total				Looking for f/t work	Total	
	'000	'000	'000	'000	'000				'000	'000	
MALES											
New South Wales	1 607.6	342.7	1 950.3	87.0	115.9	2 066.2	922.5	2 988.7	5.1	5.6	69.1
Victoria	1 287.2	271.7	1 558.9	78.3	96.3	1 655.2	680.7	2 335.9	5.7	5.8	70.9
Queensland	1 063.8	199.6	1 263.4	64.8	77.9	1 341.2	547.0	1 888.3	5.7	5.8	71.0
South Australia	342.0	87.2	429.2	26.6	32.0	461.2	219.6	680.8	7.2	6.9	67.7
Western Australia	637.8	109.6	747.4	30.1	35.6	783.0	253.7	1 036.8	4.5	4.6	75.5
Tasmania	93.1	24.8	117.9	10.8	12.1	130.0	73.5	203.5	10.4	9.3	63.9
Northern Territory	61.0	7.7	68.7	3.5	3.8	72.5	19.1	91.6	5.5	5.3	79.2
Australian Capital Territory	90.5	19.0	109.5	2.9	4.8	114.3	35.5	149.8	3.1	4.2	76.3
<b>Australia</b>	<b>5 183.0</b>	<b>1 062.2</b>	<b>6 245.3</b>	<b>304.0</b>	<b>378.4</b>	<b>6 623.7</b>	<b>2 751.6</b>	<b>9 375.3</b>	<b>5.5</b>	<b>5.7</b>	<b>70.7</b>
FEMALES											
New South Wales	921.2	762.5	1 683.7	64.8	103.1	1 786.8	1 318.9	3 105.6	6.6	5.8	57.5
Victoria	672.1	653.8	1 325.9	47.1	77.4	1 403.3	1 018.2	2 421.5	6.5	5.5	58.0
Queensland	606.2	475.1	1 081.2	40.6	61.4	1 142.7	789.1	1 931.8	6.3	5.4	59.2
South Australia	182.0	184.6	366.5	14.2	24.3	390.8	318.1	708.9	7.3	6.2	55.1
Western Australia	307.9	255.4	563.4	16.2	31.6	594.9	408.2	1 003.1	5.0	5.3	59.3
Tasmania	49.7	59.3	109.0	4.8	8.1	117.1	95.5	212.6	8.8	6.9	55.1
Northern Territory	42.7	16.2	58.9	2.1	3.1	62.0	26.4	88.4	4.7	5.0	70.1
Australian Capital Territory	62.4	36.6	99.0	*1.8	3.1	102.2	53.6	155.7	*2.8	3.1	65.6
<b>Australia</b>	<b>2 844.3</b>	<b>2 443.5</b>	<b>5 287.7</b>	<b>191.6</b>	<b>312.0</b>	<b>5 599.7</b>	<b>4 027.9</b>	<b>9 627.7</b>	<b>6.3</b>	<b>5.6</b>	<b>58.2</b>
PERSONS											
New South Wales	2 528.8	1 105.2	3 634.0	151.8	218.9	3 852.9	2 241.4	6 094.3	5.7	5.7	63.2
Victoria	1 959.3	925.5	2 884.8	125.4	173.7	3 058.5	1 699.0	4 757.5	6.0	5.7	64.3
Queensland	1 670.0	674.7	2 344.6	105.4	139.3	2 483.9	1 336.1	3 820.0	5.9	5.6	65.0
South Australia	523.9	271.8	795.7	40.8	56.3	852.0	537.7	1 389.7	7.2	6.6	61.3
Western Australia	945.8	365.0	1 310.8	46.2	67.2	1 378.0	661.9	2 039.9	4.7	4.9	67.6
Tasmania	142.9	84.0	226.9	15.6	20.2	247.1	169.0	416.1	9.9	8.2	59.4
Northern Territory	103.7	23.9	127.6	5.7	6.9	134.5	45.5	180.0	5.2	5.1	74.7
Australian Capital Territory	153.0	55.6	208.5	4.7	7.9	216.5	89.0	305.5	3.0	3.7	70.9
<b>Australia</b>	<b>8 027.3</b>	<b>3 505.7</b>	<b>11 533.0</b>	<b>495.6</b>	<b>690.4</b>	<b>12 223.4</b>	<b>6 779.5</b>	<b>19 002.9</b>	<b>5.8</b>	<b>5.6</b>	<b>64.3</b>

\* estimate is subject to sampling variability too high for most practical purposes

	EMPLOYED		UNEMPLOYED		UNEMPLOYMENT RATE		Participation rate	Employment to population ratio	Unemployment to population ratio – looking for full-time work
	Full time	Total	Looking for f/t work	Total	Looking for f/t work	Total			
	'000	'000	'000	'000	%	%			
MALES									
August 2010	144.7	346.9	37.0	73.7	20.3	17.5	55.0	45.3	4.8
August 2011	130.6	341.5	35.7	67.2	21.4	16.4	53.6	44.8	4.7
2012									
August	130.6	330.5	40.3	75.6	23.6	18.6	53.4	43.4	5.3
September	131.8	328.9	41.2	75.8	23.8	18.7	53.2	43.2	5.4
October	132.5	327.6	41.5	75.5	23.8	18.7	52.9	43.0	5.4
November	132.0	326.6	41.2	75.1	23.8	18.7	52.7	42.9	5.4
December	130.5	326.3	40.3	74.5	23.6	18.6	52.6	42.8	5.3
2013									
January	128.2	326.6	39.3	73.8	23.5	18.4	52.5	42.9	5.2
February	125.4	327.8	38.4	73.0	23.4	18.2	52.6	43.0	5.0
March	122.8	329.1	37.6	72.2	23.4	18.0	52.6	43.2	4.9
April	120.4	329.8	36.9	71.5	23.4	17.8	52.6	43.3	4.8
May	118.4	330.0	36.2	71.0	23.4	17.7	52.6	43.3	4.8
June	116.7	329.8	35.6	70.8	23.4	17.7	52.6	43.3	4.7
July	115.3	329.3	35.2	70.9	23.4	17.7	52.6	43.2	4.6
August	114.5	329.1	34.6	71.0	23.2	17.7	52.5	43.2	4.5
FEMALES									
August 2010	73.5	346.5	31.2	71.9	29.8	17.2	57.5	47.6	4.3
August 2011	71.2	356.2	25.7	61.7	26.5	14.8	57.7	49.2	3.6
2012									
August	69.8	350.0	23.3	62.3	25.0	15.1	56.9	48.3	3.2
September	68.5	348.9	22.7	61.3	24.8	14.9	56.6	48.2	3.1
October	67.0	347.8	22.3	60.5	24.9	14.8	56.4	48.0	3.1
November	65.3	347.1	22.2	60.0	25.3	14.7	56.2	47.9	3.1
December	63.5	347.0	22.5	59.9	26.1	14.7	56.2	47.9	3.1
2013									
January	61.8	347.7	23.2	59.6	27.3	14.6	56.2	48.0	3.2
February	60.1	348.9	23.9	59.0	28.5	14.5	56.3	48.1	3.3
March	59.0	349.9	24.5	58.4	29.4	14.3	56.3	48.3	3.4
April	58.5	350.5	24.8	58.1	29.8	14.2	56.4	48.4	3.4
May	58.3	350.5	25.1	58.0	30.1	14.2	56.4	48.4	3.5
June	58.2	349.9	25.6	58.8	30.5	14.4	56.4	48.3	3.5
July	58.2	348.9	26.3	59.9	31.1	14.6	56.4	48.2	3.6
August	58.3	347.7	27.2	61.6	31.7	15.1	56.5	48.0	3.8
PERSONS									
August 2010	218.2	693.4	68.2	145.5	23.8	17.3	56.2	46.5	4.6
August 2011	201.9	697.7	61.4	128.9	23.3	15.6	55.6	46.9	4.1
2012									
August	200.4	680.5	63.6	138.0	24.1	16.9	55.1	45.8	4.3
September	200.3	677.8	63.9	137.1	24.2	16.8	54.9	45.6	4.3
October	199.5	675.4	63.8	136.0	24.2	16.8	54.6	45.5	4.3
November	197.3	673.7	63.3	135.1	24.3	16.7	54.4	45.3	4.3
December	194.0	673.3	62.8	134.4	24.5	16.6	54.3	45.3	4.2
2013									
January	190.0	674.3	62.5	133.4	24.8	16.5	54.3	45.4	4.2
February	185.6	676.7	62.3	132.0	25.2	16.3	54.4	45.5	4.2
March	181.8	679.1	62.1	130.6	25.5	16.1	54.4	45.7	4.2
April	178.9	680.4	61.7	129.5	25.6	16.0	54.5	45.7	4.2
May	176.7	680.5	61.3	129.1	25.8	15.9	54.4	45.8	4.1
June	174.9	679.7	61.2	129.6	25.9	16.0	54.4	45.7	4.1
July	173.5	678.2	61.5	130.8	26.1	16.2	54.4	45.6	4.1
August	172.7	676.8	61.7	132.6	26.3	16.4	54.5	45.6	4.2

	EMPLOYED		UNEMPLOYED		UNEMPLOYMENT RATE		Participation rate	Employment to population ratio	Unemployment to population ratio – looking for full-time work
	Full time	Total	Looking for f/t work	Total	Looking for f/t work	Total			
	'000	'000	'000	'000	%	%			
MALES									
August 2010	140.2	345.2	36.9	73.1	20.8	17.5	54.7	45.1	4.8
August 2011	132.6	342.0	39.3	68.5	22.9	16.7	53.9	44.9	5.2
2012									
August	131.2	339.2	40.2	77.1	23.5	18.5	54.7	44.5	5.3
September	134.2	329.5	42.8	77.4	24.2	19.0	53.4	43.3	5.6
October	135.1	325.4	41.1	73.8	23.3	18.5	52.4	42.7	5.4
November	130.8	325.4	42.0	76.3	24.3	19.0	52.8	42.7	5.5
December	130.8	319.7	41.4	74.8	24.0	19.0	51.8	42.0	5.4
2013									
January	128.4	333.2	35.7	70.1	21.8	17.4	52.9	43.7	4.7
February	124.8	328.4	38.9	73.7	23.8	18.3	52.7	43.1	5.1
March	122.5	328.2	39.7	77.9	24.5	19.2	53.2	43.0	5.2
April	119.8	328.9	35.8	68.9	23.0	17.3	52.2	43.1	4.7
May	121.2	329.4	35.2	67.8	22.5	17.1	52.1	43.2	4.6
June	112.2	332.1	37.8	71.4	25.2	17.7	53.0	43.6	5.0
July	116.1	332.0	32.6	70.5	21.9	17.5	52.9	43.6	4.3
August	115.7	324.6	35.8	73.6	23.6	18.5	52.3	42.6	4.7
FEMALES									
August 2010	74.4	344.4	31.1	76.4	29.5	18.2	57.8	47.3	4.3
August 2011	71.5	363.7	24.5	56.8	25.5	13.5	58.1	50.2	3.4
2012									
August	67.8	350.9	24.2	58.7	26.4	14.3	56.5	48.4	3.3
September	67.3	346.9	25.1	62.8	27.2	15.3	56.5	47.9	3.5
October	67.5	346.4	22.3	66.1	24.8	16.0	56.9	47.8	3.1
November	66.8	347.8	17.1	51.3	20.3	12.8	55.1	48.0	2.4
December	64.7	349.4	22.3	58.9	25.6	14.4	56.4	48.3	3.1
2013									
January	61.2	346.6	25.5	66.8	29.4	16.2	57.1	47.8	3.5
February	58.1	345.0	25.7	58.7	30.7	14.6	55.7	47.6	3.5
March	58.4	349.7	24.5	55.8	29.6	13.8	55.9	48.2	3.4
April	59.2	354.8	23.5	59.5	28.4	14.4	57.1	48.9	3.2
May	58.8	352.9	24.8	55.5	29.7	13.6	56.4	48.7	3.4
June	57.9	347.8	26.0	58.4	31.0	14.4	56.1	48.0	3.6
July	58.1	349.3	24.1	58.2	29.3	14.3	56.3	48.2	3.3
August	58.4	344.3	30.5	66.8	34.3	16.2	56.7	47.5	4.2
PERSONS									
August 2010	214.7	689.6	68.0	149.5	24.1	17.8	56.2	46.2	4.6
August 2011	204.0	705.7	63.8	125.2	23.8	15.1	55.9	47.5	4.3
2012									
August	199.0	690.1	64.5	135.8	24.5	16.4	55.6	46.4	4.3
September	201.5	676.4	67.9	140.2	25.2	17.2	54.9	45.5	4.6
October	202.7	671.8	63.4	139.9	23.8	17.2	54.6	45.2	4.3
November	197.5	673.3	59.1	127.6	23.0	15.9	53.9	45.3	4.0
December	195.5	669.2	63.7	133.7	24.6	16.7	54.1	45.1	4.3
2013									
January	189.6	679.8	61.2	136.9	24.4	16.8	54.9	45.7	4.1
February	182.9	673.4	64.7	132.5	26.1	16.4	54.2	45.3	4.3
March	180.9	677.9	64.2	133.7	26.2	16.5	54.5	45.5	4.3
April	179.0	683.7	59.3	128.3	24.9	15.8	54.6	46.0	4.0
May	180.0	682.3	60.0	123.3	25.0	15.3	54.2	45.9	4.0
June	170.0	679.9	63.8	129.9	27.3	16.0	54.5	45.8	4.3
July	174.2	681.3	56.7	128.7	24.6	15.9	54.5	45.9	3.8
August	174.2	669.0	66.3	140.3	27.6	17.3	54.5	45.0	4.5

	EMPLOYED			UNEMPLOYED			Civilian population aged 15–19 years	UNEMPLOYMENT RATE		Participation rate	Unemployment to population ratio – looking for full-time work	
	Full time	Part time	Total	Looking for f/t work	Total	Labour force		Not in labour force	Looking for f/t work			Total
	'000	'000	'000	'000	'000	'000		'000	%			%
NOT ATTENDING FULL-TIME EDUCATION												
<b>Males</b>												
August 2010	124.6	45.3	169.8	28.2	30.1	200.0	28.2	228.1	18.5	15.1	87.6	12.4
August 2011	115.8	41.3	157.1	30.3	32.0	189.0	35.8	224.8	20.8	16.9	84.1	13.5
August 2012	114.5	39.5	154.0	30.5	32.7	186.6	31.9	218.5	21.0	17.5	85.4	13.9
August 2013	97.1	42.8	139.9	25.5	29.0	168.9	30.7	199.6	20.8	17.2	84.6	12.8
<b>Females</b>												
August 2010	62.5	49.9	112.4	23.6	26.7	139.2	30.3	169.5	27.4	19.2	82.1	13.9
August 2011	61.8	56.6	118.4	17.2	19.7	138.1	35.9	174.0	21.8	14.2	79.4	9.9
August 2012	56.5	48.9	105.4	17.7	23.2	128.5	29.4	158.0	23.9	18.0	81.4	11.2
August 2013	50.3	49.8	100.1	18.3	20.0	120.1	29.0	149.1	26.7	16.7	80.6	12.3
<b>Persons</b>												
August 2010	187.1	95.2	282.3	51.8	56.8	339.1	58.5	397.6	21.7	16.8	85.3	13.0
August 2011	177.6	97.9	275.5	47.6	51.6	327.1	71.7	398.8	21.1	15.8	82.0	11.9
August 2012	171.0	88.3	259.3	48.2	55.9	315.2	61.3	376.5	22.0	17.7	83.7	12.8
August 2013	147.5	92.6	240.1	43.8	49.0	289.1	59.7	348.7	22.9	16.9	82.9	12.6
ATTENDING FULL-TIME EDUCATION												
<b>Males</b>												
August 2010	*4.1	152.1	156.2	*5.7	32.4	188.6	348.7	537.3	*58.1	17.2	35.1	*1.1
August 2011	*5.3	160.0	165.3	6.2	27.7	193.0	344.4	537.4	53.7	14.3	35.9	1.1
August 2012	*5.4	160.1	165.5	7.2	35.7	201.2	341.7	542.9	57.2	17.7	37.1	1.3
August 2013	8.6	157.3	165.9	8.2	37.0	202.9	359.1	561.9	48.6	18.2	36.1	1.5
<b>Females</b>												
August 2010	*5.7	209.9	215.6	*2.7	42.5	258.2	299.9	558.0	*32.3	16.5	46.3	*0.5
August 2011	*3.6	224.0	227.5	*3.3	31.0	258.6	291.7	550.3	*48.1	12.0	47.0	*0.6
August 2012	*5.6	222.5	228.2	*2.6	28.7	256.8	309.7	566.5	*31.4	11.2	45.3	*0.5
August 2013	*3.3	223.8	227.1	7.4	38.5	265.6	309.7	575.2	69.2	14.5	46.2	1.3
<b>Persons</b>												
August 2010	9.8	362.0	371.8	8.4	74.9	446.7	648.6	1 095.3	46.1	16.8	40.8	0.8
August 2011	8.9	384.0	392.9	9.5	58.7	451.6	636.1	1 087.7	51.6	13.0	41.5	0.9
August 2012	11.0	382.7	393.7	9.8	64.3	458.0	651.4	1 109.4	47.1	14.0	41.3	0.9
August 2013	11.9	381.1	393.0	15.6	75.4	468.4	668.7	1 137.2	56.6	16.1	41.2	1.4
TOTAL												
<b>Males</b>												
August 2010	128.7	197.3	326.0	33.9	62.5	388.5	376.9	765.4	20.8	16.1	50.8	4.4
August 2011	121.1	201.3	322.4	36.5	59.6	382.0	380.2	762.2	23.2	15.6	50.1	4.8
August 2012	119.9	199.6	319.5	37.7	68.4	387.8	373.6	761.4	23.9	17.6	50.9	5.0
August 2013	105.8	200.1	305.8	33.6	66.0	371.8	389.7	761.5	24.1	17.7	48.8	4.4
<b>Females</b>												
August 2010	68.2	259.8	328.1	26.3	69.3	397.3	330.2	727.5	27.9	17.4	54.6	3.6
August 2011	65.4	280.6	346.0	20.6	50.7	396.7	327.6	724.3	23.9	12.8	54.8	2.8
August 2012	62.1	271.4	333.5	20.3	51.8	385.4	339.1	724.5	24.7	13.5	53.2	2.8
August 2013	53.6	273.6	327.2	25.7	58.5	385.7	338.7	724.4	32.4	15.2	53.2	3.5
<b>Persons</b>												
August 2010	196.9	457.2	654.1	60.2	131.8	785.8	707.1	1 492.9	23.4	16.8	52.6	4.0
August 2011	186.5	481.9	668.4	57.1	110.3	778.7	707.8	1 486.6	23.4	14.2	52.4	3.8
August 2012	182.0	471.0	653.0	58.0	120.2	773.2	712.7	1 485.9	24.2	15.5	52.0	3.9
August 2013	159.4	473.7	633.1	59.3	124.4	757.5	728.4	1 485.9	27.1	16.4	51.0	4.0

\* estimate is subject to sampling variability too high for most practical purposes

	EMPLOYED			UNEMPLOYED		Labour force	Not in labour force	Civilian population aged 15–19 years	UNEMPLOYMENT RATE		Participation rate	Unemployment to population ratio – looking for full-time work
	Full time	Part time	Total	Looking for f/t work	Total				Looking for f/t work	Total		
	'000	'000	'000	'000	'000				'000	'000		
NOT ATTENDING FULL-TIME EDUCATION												
New South Wales	43.7	27.2	70.9	10.4	11.2	82.1	19.6	101.7	19.1	13.6	80.7	10.2
Victoria	26.9	14.6	41.5	7.7	8.2	49.7	10.9	60.6	22.2	16.6	82.1	12.7
Queensland	39.9	26.4	66.3	14.4	17.0	83.2	15.4	98.6	26.6	20.4	84.4	14.6
South Australia	5.9	7.6	13.5	*3.5	3.9	17.4	*3.3	20.8	*36.9	22.3	84.0	*16.7
Western Australia	23.0	13.5	36.5	*5.2	5.9	42.4	6.1	48.5	*18.4	13.8	87.4	*10.7
Tasmania	3.9	1.6	5.5	1.9	2.1	7.6	*1.2	8.9	33.4	27.9	86.0	21.8
Northern Territory	3.0	0.9	3.8	*0.6	*0.6	4.4	1.8	6.2	*15.7	*12.6	70.4	*8.9
Australian Capital Territory	*1.1	*0.9	2.0	*0.2	*0.2	2.2	*1.3	3.5	*13.2	*7.9	63.6	*5.0
<b>Australia</b>	<b>147.5</b>	<b>92.6</b>	<b>240.1</b>	<b>43.8</b>	<b>49.0</b>	<b>289.1</b>	<b>59.7</b>	<b>348.7</b>	<b>22.9</b>	<b>16.9</b>	<b>82.9</b>	<b>12.6</b>
ATTENDING FULL-TIME EDUCATION												
New South Wales	*4.5	118.0	122.5	*4.5	23.0	145.5	222.5	368.0	*50.3	15.8	39.5	*1.2
Victoria	*1.0	100.5	101.5	*3.7	19.8	121.3	178.2	299.5	*78.7	16.3	40.5	*1.2
Queensland	*4.1	79.9	84.0	*3.6	16.7	100.6	116.1	216.7	*47.1	16.6	46.4	*1.7
South Australia	*0.5	29.9	30.4	*1.1	5.2	35.6	49.1	84.7	*68.6	14.7	42.1	*1.3
Western Australia	*1.4	34.6	35.9	*1.1	5.9	41.8	71.5	113.3	*43.3	14.1	36.9	*0.9
Tasmania	*0.2	7.0	7.1	*0.9	2.4	9.5	15.2	24.8	*84.0	25.2	38.5	*3.6
Northern Territory	*0.1	4.0	4.1	*0.3	*0.4	4.5	5.7	10.2	*72.0	*9.5	44.4	*2.5
Australian Capital Territory	*0.2	7.2	7.4	*0.4	*2.0	9.5	10.5	20.0	*65.3	*21.6	47.5	*1.9
<b>Australia</b>	<b>11.9</b>	<b>381.1</b>	<b>393.0</b>	<b>15.6</b>	<b>75.4</b>	<b>468.4</b>	<b>668.7</b>	<b>1 137.2</b>	<b>56.6</b>	<b>16.1</b>	<b>41.2</b>	<b>1.4</b>
TOTAL												
New South Wales	48.2	145.2	193.4	14.9	34.2	227.6	242.1	469.7	23.6	15.0	48.5	3.2
Victoria	27.9	115.1	143.0	11.4	28.0	171.0	189.1	360.1	28.9	16.4	47.5	3.2
Queensland	44.0	106.2	150.2	18.1	33.6	183.8	131.5	315.3	29.1	18.3	58.3	5.7
South Australia	6.4	37.5	43.9	4.6	9.1	53.1	52.4	105.5	41.6	17.2	50.3	4.3
Western Australia	24.4	48.1	72.5	6.2	11.7	84.2	77.6	161.8	20.4	13.9	52.0	3.9
Tasmania	4.0	8.6	12.6	2.8	4.5	17.2	16.5	33.6	41.3	26.4	51.0	8.4
Northern Territory	3.1	4.9	7.9	*0.8	*1.0	8.9	7.5	16.4	*20.9	*11.0	54.2	*4.9
Australian Capital Territory	*1.4	8.1	9.5	*0.6	*2.2	11.7	11.7	23.4	*29.1	*19.0	49.9	*2.4
<b>Australia</b>	<b>159.4</b>	<b>473.7</b>	<b>633.1</b>	<b>59.3</b>	<b>124.4</b>	<b>757.5</b>	<b>728.4</b>	<b>1 485.9</b>	<b>27.1</b>	<b>16.4</b>	<b>51.0</b>	<b>4.0</b>

\* estimate is subject to sampling variability too high for most practical purposes

LABOUR FORCE STATUS IN AUGUST 2013

<i>Labour force status in July 2013</i>	<i>Employed Full time</i>	<i>Employed Part time</i>	<i>Employed Total</i>	<i>Unemployed</i>	<i>Labour Force</i>	<i>Not in Labour Force</i>	<i>Matched Civilian Population</i>
	'000	'000	'000	'000	'000	'000	'000
MALES							
Employed Full time	3 432.7	121.7	3 554.5	26.8	3 581.3	58.4	3 639.7
Employed Part time	120.6	542.8	663.4	20.9	684.3	60.7	745.0
Employed Total	3 553.4	664.5	4 217.9	47.8	4 265.6	119.1	4 384.7
Unemployed Total	28.7	23.7	52.4	139.7	192.1	60.6	252.7
Labour Force	3 582.1	688.2	4 270.3	187.4	4 457.7	179.7	4 637.4
Not in Labour Force	34.0	55.3	89.2	66.2	155.4	1 599.9	1 755.3
Matched Civilian Population	3 616.1	743.4	4 359.5	253.6	4 613.1	1 779.6	6 392.7
FEMALES							
Employed Full time	1 769.0	167.2	1 936.1	10.4	1 946.6	40.0	1 986.6
Employed Part time	171.6	1 444.4	1 616.1	19.7	1 635.8	109.7	1 745.5
Employed Total	1 940.6	1 611.6	3 552.2	30.2	3 582.4	149.7	3 732.1
Unemployed Total	11.9	28.9	40.8	103.0	143.8	63.2	207.0
Labour Force	1 952.5	1 640.5	3 593.0	133.1	3 726.1	212.9	3 939.1
Not in Labour Force	27.3	88.2	115.5	74.4	190.0	2 431.7	2 621.7
Matched Civilian Population	1 979.8	1 728.7	3 708.5	207.6	3 916.1	2 644.7	6 560.8
PERSONS							
Employed Full time	5 201.7	288.9	5 490.6	37.3	5 527.9	98.4	5 626.3
Employed Part time	292.3	1 987.2	2 279.5	40.7	2 320.1	170.5	2 490.6
Employed Total	5 494.0	2 276.1	7 770.1	77.9	7 848.0	268.8	8 116.8
Unemployed Total	40.7	52.6	93.2	242.6	335.9	123.8	459.7
Labour Force	5 534.7	2 328.6	7 863.3	320.6	8 183.9	392.6	8 576.5
Not in Labour Force	61.2	143.5	204.7	140.6	345.4	4 031.6	4 377.0
Matched Civilian Population	5 595.9	2 472.1	8 068.0	461.2	8 529.3	4 424.2	12 953.5

(a) Gross flows figures do not match published labour force estimates. Refer to gross flows in Glossary.

(b) Gross flow figures lower this month due to the phase-in of the new sample design, with the rotation of two rotation groups rather than the usual one rotation group. See feature article in May 2013 issue of this publication for more information.

	TREND			SEASONALLY ADJUSTED		
	<i>Full time workers</i>	<i>Part time workers</i>	<i>Total</i>	<i>Full time workers</i>	<i>Part time workers</i>	<i>Total</i>
	millions	millions	millions	millions	millions	millions
MALES						
August 2010	908.4	69.7	978.1	910.1	70.7	980.7
August 2011	924.4	69.9	994.3	922.7	69.8	992.4
2012						
August	926.3	70.1	996.4	927.4	70.1	997.5
September	926.6	69.7	996.3	927.2	69.4	996.5
October	927.2	69.6	996.8	926.3	70.5	996.8
November	927.8	69.9	997.8	929.2	69.3	998.5
December	928.4	70.5	998.8	928.7	69.0	997.7
2013						
January	928.5	71.2	999.7	926.8	70.7	997.5
February	928.7	72.0	1 000.6	929.3	75.3	1 004.5
March	929.0	72.6	1 001.5	929.5	71.7	1 001.3
April	929.5	73.0	1 002.5	932.3	72.0	1 004.3
May	930.4	73.2	1 003.6	925.3	73.5	998.8
June	931.5	73.4	1 004.9	930.1	73.8	1 003.9
July	932.6	73.5	1 006.2	937.2	73.2	1 010.3
August	933.6	73.6	1 007.2	933.6	73.9	1 007.5
FEMALES						
August 2010	443.6	165.7	609.3	446.2	162.9	609.1
August 2011	455.5	169.9	625.5	456.3	170.8	627.0
2012						
August	452.9	170.3	623.1	448.6	171.3	619.9
September	452.9	170.7	623.6	458.2	171.7	629.9
October	453.5	171.2	624.7	449.9	169.6	619.5
November	454.3	171.7	626.1	454.9	171.9	626.8
December	455.2	172.3	627.5	456.4	173.2	629.6
2013						
January	455.9	172.9	628.8	455.8	172.2	628.0
February	456.6	173.6	630.2	457.2	173.2	630.4
March	457.4	174.2	631.6	455.1	175.1	630.1
April	458.5	174.6	633.1	461.9	175.2	637.1
May	459.9	174.9	634.8	457.1	173.8	630.9
June	461.7	175.0	636.7	461.8	175.2	637.0
July	463.5	175.0	638.5	461.7	176.8	638.5
August	465.2	174.8	640.1	469.4	173.0	642.4
PERSONS						
August 2010	1 352.0	235.4	1 587.6	1 356.3	233.5	1 589.8
August 2011	1 379.9	239.9	1 619.8	1 378.9	240.5	1 619.5
2012						
August	1 379.2	240.4	1 619.6	1 376.0	241.4	1 617.5
September	1 379.5	240.4	1 619.9	1 385.4	241.1	1 626.4
October	1 380.7	240.8	1 621.5	1 376.2	240.1	1 616.3
November	1 382.2	241.6	1 623.8	1 384.0	241.2	1 625.2
December	1 383.5	242.8	1 626.3	1 385.1	242.2	1 627.3
2013						
January	1 384.4	244.1	1 628.6	1 382.6	242.9	1 625.4
February	1 385.3	245.6	1 630.9	1 386.5	248.4	1 634.9
March	1 386.4	246.8	1 633.2	1 384.6	246.8	1 631.4
April	1 388.0	247.6	1 635.6	1 394.2	247.1	1 641.3
May	1 390.3	248.1	1 638.4	1 382.4	247.2	1 629.6
June	1 393.2	248.4	1 641.5	1 391.8	249.0	1 640.9
July	1 396.2	248.5	1 644.7	1 398.9	250.0	1 648.9
August	1 398.9	248.4	1 647.3	1 403.0	246.9	1 650.0

## HOURS WORKED

	New South Wales	Victoria	Queensland	South Australia	Western Australia	Tasmania	Northern Territory	Australian Capital Territory	Australia
	millions	millions	millions	millions	millions	millions	millions	millions	millions

## SEASONALLY ADJUSTED

August 2010	499.5	391.7	331.3	112.2	176.2	31.7	np	np	1 589.8
August 2011	505.7	401.5	338.1	114.1	181.1	31.6	np	np	1 619.5
2012									
August	508.2	397.6	333.4	109.9	189.5	30.8	np	np	1 617.5
September	510.3	396.8	334.3	111.9	194.9	30.2	np	np	1 626.4
October	510.8	399.0	325.8	112.1	189.6	30.9	np	np	1 616.3
November	511.3	395.7	336.8	110.6	191.8	30.6	np	np	1 625.2
December	512.0	398.4	335.8	111.8	190.4	30.3	np	np	1 627.3
2013									
January	512.4	396.5	335.9	112.1	190.5	30.4	np	np	1 625.4
February	515.2	399.7	340.8	112.2	189.1	30.4	np	np	1 634.9
March	513.6	398.9	336.4	112.2	192.7	30.3	np	np	1 631.4
April	516.4	403.9	337.2	111.8	193.2	31.1	np	np	1 641.3
May	517.3	399.0	337.0	115.0	184.1	28.9	np	np	1 629.6
June	520.3	403.0	335.8	112.3	191.1	30.2	np	np	1 640.9
July	520.1	405.1	347.5	109.1	190.6	28.9	np	np	1 648.9
August	518.2	402.9	347.8	110.2	193.1	29.6	np	np	1 650.0

## TREND

August 2010	499.5	391.2	331.8	111.8	174.7	31.7	18.6	28.2	1 587.6
August 2011	505.3	400.9	338.4	113.3	182.6	31.6	18.7	28.9	1 619.8
2012									
August	508.4	397.0	332.6	111.3	191.5	30.6	19.3	28.8	1 619.6
September	509.3	396.9	332.3	111.3	191.3	30.6	19.4	28.8	1 619.9
October	510.4	397.1	332.7	111.4	191.1	30.6	19.4	28.8	1 621.5
November	511.4	397.3	333.8	111.5	191.1	30.5	19.4	28.8	1 623.8
December	512.2	397.6	335.3	111.6	191.0	30.5	19.3	28.8	1 626.3
2013									
January	512.9	398.1	336.5	111.9	190.8	30.5	19.2	28.7	1 628.6
February	513.9	398.9	337.0	112.3	190.5	30.4	19.0	28.7	1 630.9
March	515.1	399.9	337.3	112.6	190.3	30.3	19.0	28.7	1 633.2
April	516.4	400.9	337.7	112.6	190.1	30.1	19.0	28.7	1 635.6
May	517.6	401.8	338.8	112.3	190.1	29.9	19.1	28.7	1 638.4
June	518.6	402.7	340.6	111.8	190.2	29.7	19.3	28.7	1 641.5
July	519.3	403.4	342.7	111.2	190.6	29.5	19.4	28.6	1 644.7
August	519.8	403.8	344.7	110.6	191.1	29.3	19.5	28.5	1 647.3

np not available for publication but included in totals where applicable, unless otherwise indicated



	TREND			SEASONALLY ADJUSTED			ORIGINAL		
	<i>Under-employed workers</i>	<i>Under-employment rate</i>	<i>Labour force under-utilisation rate</i>	<i>Under-employed workers</i>	<i>Under-employment rate</i>	<i>Labour force under-utilisation rate</i>	<i>Under-employed workers</i>	<i>Under-employment rate</i>	<i>Labour force under-utilisation rate</i>
	'000	%	%	'000	%	%	'000	%	%
MALES									
August 2009	396.6	6.3	12.2	381.8	6.0	12.0	374.8	6.0	11.6
August 2010	357.6	5.6	10.5	372.5	5.8	10.6	366.0	5.7	10.3
August 2011	346.9	5.3	10.4	336.3	5.2	10.4	329.8	5.1	10.2
2012									
February	362.0	5.5	10.6	374.1	5.7	10.8	384.4	5.8	11.5
May	359.4	5.5	10.6	356.9	5.4	10.4	359.8	5.5	10.4
August	351.4	5.3	10.5	344.6	5.2	10.5	338.4	5.2	10.3
November	351.5	5.3	10.6	356.2	5.4	10.7	349.2	5.3	10.3
2013									
February	363.8	5.5	10.9	358.6	5.4	10.8	368.4	5.5	11.5
May	379.0	5.7	11.3	380.1	5.7	11.2	383.2	5.7	11.2
August	391.9	5.9	11.7	397.4	6.0	11.8	391.4	5.9	11.6
FEMALES									
August 2009	514.3	9.7	15.3	519.8	9.9	15.6	498.3	9.5	14.9
August 2010	485.9	9.0	14.5	493.5	9.2	14.7	474.2	8.9	14.1
August 2011	501.7	9.2	14.5	497.4	9.1	14.5	477.9	8.8	13.9
2012									
February	519.5	9.4	14.9	511.0	9.3	14.7	530.8	9.6	15.7
May	522.6	9.4	14.8	534.3	9.6	15.1	528.9	9.5	14.9
August	520.9	9.4	14.6	512.5	9.3	14.4	494.1	9.0	13.8
November	518.4	9.3	14.6	524.3	9.4	14.7	528.3	9.5	14.4
2013									
February	524.4	9.4	14.8	517.6	9.2	14.7	534.3	9.5	15.7
May	539.4	9.6	15.2	535.1	9.5	15.1	528.9	9.4	15.0
August	554.2	9.8	15.7	566.8	10.0	15.9	547.3	9.8	15.3
PERSONS									
August 2009	910.9	7.9	13.6	901.6	7.8	13.6	873.1	7.6	13.1
August 2010	843.5	7.1	12.3	866.0	7.3	12.5	840.2	7.2	12.1
August 2011	848.6	7.1	12.3	833.7	6.9	12.3	807.7	6.8	11.9
2012									
February	881.5	7.3	12.5	885.1	7.4	12.6	915.2	7.6	13.4
May	882.0	7.3	12.5	891.2	7.3	12.6	888.6	7.3	12.5
August	872.3	7.2	12.4	857.0	7.1	12.3	832.6	6.9	11.9
November	869.8	7.1	12.4	880.5	7.2	12.5	877.5	7.2	12.2
2013									
February	888.2	7.2	12.7	876.2	7.1	12.6	902.7	7.3	13.4
May	918.4	7.5	13.1	915.2	7.4	13.0	912.1	7.4	12.9
August	946.1	7.7	13.5	964.3	7.8	13.7	938.7	7.7	13.3

	TREND			SEASONALLY ADJUSTED			ORIGINAL		
	<i>Under-employed workers</i>	<i>Under-employment rate</i>	<i>Labour force under-utilisation rate</i>	<i>Under-employed workers</i>	<i>Under-employment rate</i>	<i>Labour force under-utilisation rate</i>	<i>Under-employed workers</i>	<i>Under-employment rate</i>	<i>Labour force under-utilisation rate</i>
	'000	%	%	'000	%	%	'000	%	%
MALES									
New South Wales	126.6	6.0	11.9	128.1	6.1	12.0	127.6	6.2	11.8
Victoria	103.5	6.2	11.8	103.9	6.2	12.0	100.8	6.1	11.9
Queensland	82.7	6.1	12.4	82.0	6.1	12.4	78.0	5.8	11.6
South Australia	29.8	6.4	13.1	30.3	6.5	13.4	30.3	6.6	13.5
Western Australia	34.6	4.4	9.1	37.1	4.7	9.3	37.5	4.8	9.3
Tasmania	10.8	8.2	16.8	11.1	8.5	17.7	11.5	8.8	18.2
Northern Territory	1.8	2.5	8.1	1.5	2.1	7.7	1.4	1.9	7.2
Australian Capital Territory	4.2	3.7	7.5	4.2	3.7	8.1	4.3	3.7	7.9
<b>Australia</b>	<b>391.9</b>	<b>5.9</b>	<b>11.7</b>	<b>397.4</b>	<b>6.0</b>	<b>11.8</b>	<b>391.4</b>	<b>5.9</b>	<b>11.6</b>
FEMALES									
New South Wales	171.5	9.5	15.6	176.9	9.8	16.0	172.4	9.6	15.4
Victoria	152.7	10.8	16.4	157.7	11.2	16.9	152.8	10.9	16.4
Queensland	112.2	9.7	15.4	113.4	9.8	15.5	109.4	9.6	14.9
South Australia	41.2	10.3	16.7	39.3	9.9	16.7	37.2	9.5	15.7
Western Australia	53.0	8.9	14.4	53.2	8.9	14.5	50.3	8.4	13.8
Tasmania	15.0	12.7	20.4	15.4	13.0	20.6	16.2	13.8	20.7
Northern Territory	2.5	4.0	9.5	2.7	4.4	10.1	2.4	3.9	8.9
Australian Capital Territory	7.0	6.8	10.8	7.0	6.9	10.6	6.7	6.5	9.6
<b>Australia</b>	<b>554.2</b>	<b>9.8</b>	<b>15.7</b>	<b>566.8</b>	<b>10.0</b>	<b>15.9</b>	<b>547.3</b>	<b>9.8</b>	<b>15.3</b>
PERSONS									
New South Wales	298.1	7.7	13.6	305.0	7.8	13.9	299.9	7.8	13.5
Victoria	256.2	8.3	14.0	261.6	8.5	14.3	253.6	8.3	14.0
Queensland	195.0	7.8	13.8	195.4	7.8	13.8	187.4	7.5	13.2
South Australia	71.0	8.2	14.7	69.6	8.1	14.9	67.5	7.9	14.5
Western Australia	87.7	6.3	11.4	90.3	6.5	11.5	87.8	6.4	11.2
Tasmania	25.8	10.3	18.5	26.5	10.6	19.1	27.7	11.2	19.4
Northern Territory	4.2	3.2	8.8	4.2	3.1	8.8	3.8	2.9	8.0
Australian Capital Territory	11.2	5.1	9.1	11.2	5.2	9.3	10.9	5.1	8.7
<b>Australia</b>	<b>946.1</b>	<b>7.7</b>	<b>13.5</b>	<b>964.3</b>	<b>7.8</b>	<b>13.7</b>	<b>938.7</b>	<b>7.7</b>	<b>13.3</b>

# WHAT IF...? REVISIONS TO TREND ESTIMATES

## EFFECT OF NEW SEASONALLY ADJUSTED ESTIMATES ON TREND ESTIMATES

### TREND REVISIONS

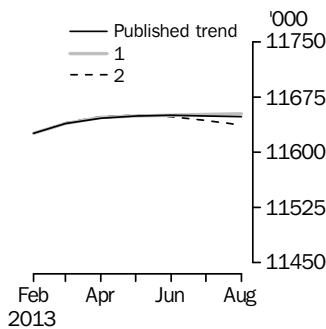
Each time new seasonally adjusted estimates become available, trend estimates are revised. This revision is a combined result of the concurrent seasonal adjustment process and the application of surrogates of the Henderson average to the seasonally adjusted series (see paragraphs 28 to 36 of the Explanatory Notes).

The examples in the tables below show two illustrative scenarios and the consequent revisions to previous trend estimates of employment and the unemployment rate. The revisions in the scenarios are due to the use of surrogates of the Henderson average, as the impact of revision of seasonally adjusted estimates can not be estimated in advance.

- (1) The September seasonally adjusted estimate is *higher* than the August estimate by:
  - 0.24% for employment
  - 2.20% for the unemployment rate
- (2) The September seasonally adjusted estimate is *lower* than the August estimate by:
  - 0.24% for employment
  - 2.20% for the unemployment rate

The percentage changes of 0.24% and 2.20% represent the average absolute monthly percentage changes in employment and the unemployment rate respectively. Estimates in the graphs have been calculated using unrounded estimates, and may be different from, but more accurate than, rounded estimates depicted in the corresponding table.

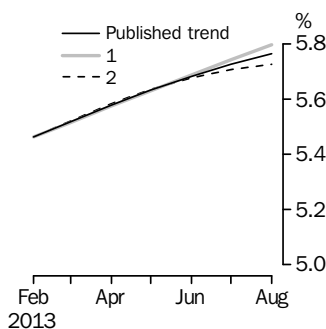
### EMPLOYMENT



#### WHAT IF NEXT MONTH'S SEASONALLY ADJUSTED ESTIMATE IS:

	<i>Trend as published</i>	<i>(1) 11 665.0 i.e. rises by 0.24%</i>	<i>(2) 11 609.1 i.e. falls by 0.24%</i>
<b>2013</b>			
May	11 649.7	11 649.7	11 650.7
June	11 650.6	11 650.7	11 648.2
July	11 649.8	11 651.8	11 643.5
August	11 648.3	11 652.9	11 637.3

### UNEMPLOYMENT RATE



#### WHAT IF NEXT MONTH'S SEASONALLY ADJUSTED ESTIMATE IS:

	<i>Trend as published</i>	<i>(1) 5.9 i.e. rises by 2.20%</i>	<i>(2) 5.7 i.e. falls by 2.20%</i>
<b>2013</b>			
May	5.6	5.6	5.6
June	5.7	5.7	5.7
July	5.7	5.7	5.7
August	5.8	5.8	5.7

## EXPLANATORY NOTES

### INTRODUCTION

**1** This publication contains estimates of the civilian labour force derived from the Labour Force Survey component of the Monthly Population Survey. The full time series for estimates from this publication are also available electronically. More detailed estimates are released one week after this publication in various electronic formats – see *Labour Force, Australia, Detailed – Electronic Delivery* (cat. no. 6291.0.55.001) and *Labour Force, Australia, Detailed, Quarterly* (cat. no. 6291.0.55.003).

### CONCEPTS, SOURCES AND METHODS

**2** The conceptual framework used in Australia's Labour Force Survey aligns closely with the standards and guidelines set out in Resolutions of International Conferences of Labour Statisticians. Descriptions of the underlying concepts and structure of Australia's labour force statistics, and the sources and methods used in compiling the estimates, are presented in *Labour Statistics: Concepts, Sources and Methods* (cat. no. 6102.0.55.001) which is available on the ABS website <<http://www.abs.gov.au>>.

### LABOUR FORCE SURVEY

**3** The Labour Force Survey is based on a multi-stage area sample of private dwellings (currently approximately 26,000 houses, flats, etc.) and a list sample of non-private dwellings (hotels, motels, etc.), and covers approximately 0.32% of the civilian population of Australia aged 15 years and over.

**4** Information is obtained from the occupants of selected dwellings by specially trained interviewers using computer-assisted interviewing, or self-completion online.

**5** Households selected for the Labour Force Survey are interviewed each month for eight months, with one-eighth of the sample being replaced each month. The first interview is generally conducted face-to-face. Subsequent interviews are conducted by telephone (if acceptable to the respondent).

**6** From December 2012 to April 2013, the ABS conducted a trial of online electronic data collection. Respondents in one rotation group (i.e. one-eighth of the survey sample) were offered the option of self completing their labour force survey questionnaire online instead of via a face-to-face or telephone interview. From May 2013, the ABS has commenced the expansion of the offer of online electronic collection to each new incoming rotation group. For more information see the article in the April 2013 issue of this publication.

**7** The interviews are generally conducted during the two weeks beginning on the Sunday between the 5th and 11th of each month. The information obtained relates to the week before the interview (i.e. the reference week). Each year, to deal with operational difficulties involved with collecting and processing the Labour Force Survey around the Christmas and New Year holiday period, interviews for December start four weeks after November interviews start, and January interviews start five weeks after December interviews start. As a result, January interviewing may commence as early as the 7th or as late as the 13th, depending on the year. Occasionally, circumstances that present significant operational difficulties for survey collection can result in a change to the normal pattern for the start of interviewing.

**8** Estimates from the Labour Force Survey are usually published first in this publication 32 days after the commencement of interviews for that month, with the exception of estimates for each December which are usually published 39 days after the commencement of interviews.

### SCOPE OF SURVEY

**9** The Labour Force Survey includes all persons aged 15 years and over except members of the permanent defence forces, certain diplomatic personnel of overseas governments customarily excluded from census and estimated population counts, overseas residents in Australia, and members of non-Australian defence forces (and their dependants) stationed in Australia.

## EXPLANATORY NOTES *continued*

### COVERAGE

**10** In the Labour Force Survey, coverage rules are applied which aim to ensure that each person is associated with only one dwelling, and hence has only one chance of selection. The coverage rules are necessarily a balance between theoretical and operational considerations. Nevertheless, the chance of a person being enumerated at two separate dwellings in the survey is considered to be negligible.

### POPULATION BENCHMARKS

**11** The Labour Force Survey estimates are calculated in such a way as to add to independent estimates of the civilian population aged 15 years and over (population benchmarks). These population benchmarks are based on the most recently released estimates of Final and Preliminary quarterly Estimated Resident Population (ERP). For information on the methodology used to produce the ERP see *Australian Demographic Statistics* (cat. no. 3101.0). Since the most recently released ERP estimates lag the current time period for Labour Force estimates by nine months, the Labour Force population benchmarks are created by projecting forward three quarters past the most recently released quarterly ERP estimates. The projection is based on the historical pattern of each population component – births, deaths, interstate migration and net overseas migration (NOM). Projected estimates of NOM are supplemented with other data sources to better forecast population changes in the short-term. The main data source is the forecasts published by the Department of Immigration & Citizenship in the publication *The Outlook for Net Overseas Migration*.

**12** Commencing in March 2010, the ERP series has been revised twice-yearly, in the March and September quarter issues of *Australian Demographic Statistics* (cat. no. 3101.0). This biannual revision cycle incorporates more up to date information available for NOM. From November 2012, each biannual revision to ERP estimates have been used to update the population benchmarks used in creating the Labour Force Survey estimates, usually resulting in revisions to approximately the last two years of the historical time series.

**13** Every five years, the ERP series are revised to incorporate additional information available from the latest Census of Population and Housing (Census). Labour Force Survey population benchmarks, and the estimates, are revised following this five-yearly revision in the ERP. The process of incorporating the revised population benchmarks is referred to as 'rebased'. From the February 2009 issue of this publication, labour force estimates have been compiled using population benchmarks based on the results of the 2006 Census. Revisions were made in the February 2009 issue to historical Labour Force estimates from June 2001 to January 2009. The next rebasing based on the Census will be following the release of the 2011 Census-based ERP estimates, which will incorporate revisions back 20 years to 1991, the same revision period selected for revisions to historical ERP. This revision will be released in the January 2014 issue of this publication. For more information on revised ERP estimates, refer to the June 2012 issue of *Australian Demographic Statistics* (cat. no. 3101.0) released in December 2012.

**14** In between Censuses, the ABS revises the Labour Force population benchmarks using the latest ERP according to the paragraphs above. These were introduced in the July 2010, November 2012 and April 2013 issues and the next update will be introduced in the October 2013 issue. From the April 2014 issue, after the Census rebasing has been published in the January 2014 issue, rebenchmarking will be undertaken quarterly in the April, July, October and January issues. For more information, refer to the article *Rebenchmarking of Labour Force Series* in the November 2012 issue of this publication.

### ESTIMATION METHOD

**15** The estimation method used in the Labour Force Survey is Composite Estimation, which was introduced in May 2007. Composite Estimation combines data collected in the previous six months with current month's data to produce the current month's estimates, thereby exploiting the high correlation between overlapping samples across months in the Labour Force Survey. The Composite Estimator combines the previous

## EXPLANATORY NOTES *continued*

### ESTIMATION METHOD *continued*

and current months' data by applying different factors according to length of time in the survey. After these factors are applied, the seven months of data are weighted to align with current month population benchmarks. For details see *Information Paper: Forthcoming Changes to Labour Force Statistics, 2007* (cat. no. 6292.0).

### COMPARABILITY OF SERIES

**16** From April 1986, the definition of employed persons was changed to include persons who worked without pay between 1 and 14 hours per week in a family business or on a farm (i.e. contributing family workers). For further information, see paragraphs 22 and 23 of the Explanatory Notes in the February 2003 issue of *Labour Force, Australia* (cat. no. 6203.0).

**17** The ABS introduced telephone interviewing into the Labour Force Survey in August 1996. Implementation was phased in for each new sample group from August 1996 to February 1997. During the period of implementation, the new method produced different estimates than would have been obtained under the old methodology. The effect dissipated over the final months of implementation and was no longer discernible from February 1997. The estimates for February 1997 and onwards are directly comparable to estimates for periods prior to August 1996. For further details, see the feature article in the June 1997 issue of *Labour Force, Australia* (cat. no. 6203.0).

**18** From April 2001 the Labour Force Survey has been conducted using a redesigned questionnaire containing additional data items and some minor definitional changes. The definition of unemployed persons was changed to include all persons who were waiting to start work and were available to start in the reference week. This change was introduced in February 2004, when historical unit record data were revised from April 2001 to January 2004. This revision created a small trend break at April 2001 in unemployed persons and unemployment rate series. For further details, see *Information Paper: Forthcoming Changes to Labour Force Statistics* (cat. no. 6292.0), released in December 2003.

**19** Core labour force series were revised in April 2001 for the period April 1986 to March 2001 for the remaining definitional changes introduced with the redesigned questionnaire, to reduce the impact of the changes on labour force series. For further details, see *Information Paper: Implementing the Redesigned Labour Force Survey Questionnaire* (cat. no. 6295.0) and *Information Paper: Questionnaires Used in the Labour Force Survey* (cat. no. 6232.0).

**20** In May 2007, an improved method of estimation, known as composite estimation, was introduced into the Labour Force Survey. In introducing this change, the ABS revised unit record data from April 2001 to April 2007 based on the new estimation method. While estimates for periods prior to April 2001 are unrevised and were compiled using a different estimation method, no trend break was identified in the employed persons series. Also, no change was identified in the trend breaks in the unemployed persons and unemployment rate series which arose with the introduction of a redesigned survey form in April 2001 (as noted above in paragraph 19). For further details, see *Information Paper: Forthcoming Changes to Labour Force Statistics, 2007* (cat. no. 6292.0).

**21** As one of a range of ABS savings initiatives for the 2008-09 financial year, there was a 24% reduction in the LFS sample size for the period July 2008 to August 2009, relative to the June 2008 sample size. The sample reduction was reversed from September 2009 to December 2009, with December 2009 estimates being the first produced under the fully reinstated sample.

### LABOUR FORCE SURVEY SAMPLE

**22** The current Labour Force Survey sample has been selected using information collected in the 2011 Census of Population and Housing.

## EXPLANATORY NOTES *continued*

### LABOUR FORCE SURVEY SAMPLE *continued*

**23** The sample is being introduced over four months – May 2013 to August 2013. Two rotation groups (i.e. one-quarter of the survey sample) is introduced each month.

**24** During the sample phase-in, the increased sample rotation has an impact on the quality of estimates. Movement standard errors increased by approximately 10%, representing, for example, an increase on the standard error on the Australian monthly change in employment for May 2013 from 27,000 to approximately 29,700. Due to the use of composite estimation, there will also be a marginal impact on the quality of level estimates. Gross Flows analysis will be impacted by the sample phase-in with between 60% to 70% of the sample available for matching between the current and previous months instead of the usual 80%. After full transition to the new sample, the quality of level and movement estimates will move to the quality designed for under the 2011 sample design and will be of similar quality as the 2006 sample design. For further details, see *Information Paper: Labour Force Survey Sample Design* (cat. no. 6269.0) released on 30 May 2013.

### RELIABILITY OF ESTIMATES

**25** Two types of error are possible in an estimate based on a sample survey: sampling error and non-sampling error.

**26** Sampling error occurs because a sample, rather than the entire population, is surveyed. One measure of the likely difference resulting from not including all dwellings in the survey is given by the standard error. There are about two chances in three that a sample estimate will differ by less than one standard error from the figure that would have been obtained if all dwellings had been included in the survey, and about nineteen chances in twenty that the difference will be less than two standard errors. Standard errors of key estimates for the latest month and of movements since the previous month of these estimates are shown in the standard errors section of this publication. Standard errors for other estimates and other movements may be calculated by using the spreadsheet contained in *Labour Force Survey Standard Errors, Data Cube* (cat. no. 6298.0.55.001) which is available free of charge on the ABS website <<http://www.abs.gov.au>>.

**27** Non-sampling error arises from inaccuracies in collecting, recording and processing the data. Every effort is made to minimise reporting error by the careful design of questionnaires, intensive training and supervision of interviewers, and efficient data processing procedures. Non-sampling error also arises because information cannot be obtained from all persons selected in the survey. The Labour Force Survey receives a high level of co-operation from individuals in selected dwellings, with the average response rate over the last year being 96%. See Glossary for definition of response rate.

### SEASONAL ADJUSTMENT AND TREND ESTIMATION

**28** Seasonal adjustment is a means of removing the estimated effects of normal seasonal variation from the series so that the effects of other influences on the series can be more clearly recognised. Seasonal adjustment does not aim to remove the irregular or non-seasonal influences which may be present in any particular month. This means that month-to-month movements of the seasonally adjusted estimates may not be reliable indicators of trend behaviour.

**29** The Labour Force Survey uses the concurrent seasonal adjustment method to derive seasonal factors. Concurrent seasonal adjustment uses data up to the current month to estimate seasonal factors for the current and all previous months. This process can result in revisions each month to estimates for earlier periods. However, in most instances, the only noticeable revisions will be to the seasonally adjusted estimates for the previous month and one year prior to the current month.

## EXPLANATORY NOTES *continued*

### SEASONAL ADJUSTMENT AND TREND ESTIMATION *continued*

**30** The revision properties of the seasonally adjusted and trend estimates can be improved by the use of Autoregressive Integrated Moving Average (ARIMA) modelling. ARIMA modelling relies on the characteristics of the series being analysed to project future period data. The projected values are temporary, intermediate values, that are only used internally to improve the estimation of the seasonal factors. The projected data do not affect the original estimates and are discarded at the end of the seasonal adjustment process. The Labour Force Survey uses an ARIMA model for 95% of the individual time series. The ARIMA model is assessed as part of the annual reanalysis. For further details, see the feature article in the October 2004 issue of *Australian Economic Indicators* (cat. no. 1350.0).

**31** Seasonal adjustment is able to remove the effect of events which occur at the same time in the survey every year. However, there are some events, like holidays, which are not always at the same time in the survey cycle or which are not at the same time across Australia. The effects of these types of events on Labour Force Survey estimates cannot in all cases be removed, because the pattern of their effects cannot be determined. However, two events for which adjustment is made in the seasonally adjusted series are the January interview start date and the timing of Easter. For further details, see *Information Paper: Forthcoming Changes to Labour Force Statistics* (cat. no. 6292.0) released in December 2003.

**32** While seasonal factors for the complete time series are estimated each month, they will continue to be reviewed annually at a more detailed level to take into account each additional year's original data. This annual review will not normally result in significant changes to published estimates. The next review is scheduled to be released with the January 2014 issue of this publication, to coincide with the 20 year rebasing of the labour force estimates.

**33** The smoothing of seasonally adjusted series to produce 'trend' series reduces the impact of the irregular component of the seasonally adjusted series. These trend estimates are derived by applying a 13-term Henderson-weighted moving average to all months except the last six. The last six monthly trend estimates are obtained by applying surrogates of the Henderson average to the seasonally adjusted series. Trend estimates are used to analyse the underlying behaviour of a series over time.

**34** While this smoothing technique enables estimates to be produced for the latest month, it does result in revisions in addition to those caused by the revision of seasonally adjusted estimates. Generally, revisions due to the use of surrogates of the Henderson average become smaller, and after three months have a negligible impact on the series.

**35** Trend estimates are published for the Northern Territory in table 10 and for the Australian Capital Territory in table 11. Unadjusted series for the two Territories have shown, historically, a high degree of variability, which can lead to considerable revisions to the seasonally adjusted estimates each month when seasonal factors are estimated. For this reason, seasonally adjusted estimates are not currently published for the two Territories. In addition, caution should be exercised in the interpretation of trend estimates for the two Territories, particularly for the three most recent months, where revisions may be relatively large.

**36** For further information, see *A Guide to Interpreting Time Series – Monitoring Trends* (cat. no. 1349.0) or contact the Assistant Director, Time Series Analysis on (02) 6252 6345 or email [time.series.analysis@abs.gov.au](mailto:time.series.analysis@abs.gov.au).

### RELATED PUBLICATIONS

**37** Users may also wish to refer to the following publications:

- *Labour Force Survey Standard Products and Data Item Guide* (cat.no. 6103.0).

This publication is a reference guide for users of Labour Force Survey data standard products.



## EXPLANATORY NOTES *continued*

### RELATED PUBLICATIONS

*continued*

■ *Australian Labour Market Statistics* (cat. no. 6105.0). This publication presents key indicators of the labour market, articles on a range of labour market issues, and information about the latest developments in the labour statistics program. For further information about this publication, please contact Labour Market Statistics on (02) 6252 7206.

**38** ABS information about the labour market can be found on the Topics @ a Glance page on the ABS website <<http://www.abs.gov.au>>.

**39** Information about current publications and other products released by the ABS is available from the statistics page on the ABS website. The ABS also issues a daily release advice on the website, Upcoming Product Releases, which details products to be released in the week ahead.

### DATA AVAILABLE ON REQUEST

**40** As well as the statistics included in this and related publications, the ABS may have other relevant data available. Inquiries should be made to the Labour Force contact officer on (02) 6252 6525, email [labourforce@abs.gov.au](mailto:labourforce@abs.gov.au) or to any ABS office.

### EFFECTS OF ROUNDING

**41** Estimates have been rounded and discrepancies may occur between sums of the component items and totals. Estimates of movement shown in this publication are obtained by taking the difference of unrounded estimates. The movement estimate is then rounded. Where a discrepancy occurs between the reported movement and the difference of the rounded estimates, the reported movement will be more accurate.

### SYMBOLS AND ABBREVIATIONS

#### **42** SYMBOLS AND ABBREVIATIONS

<i>Symbol</i>	<i>Definition</i>
'000	thousands
%	percentage
ABS	Australian Bureau of Statistics
CAI	computer assisted interviewing
cat. no.	catalogue number
ERP	estimated resident population
f/t	full time
LFS	Labour Force Survey
p/t	part time
pts	percentage points
Seas adj.	seasonally adjusted
TAFE	Technical and Further Education

## STANDARD ERRORS

### STANDARD ERRORS

The estimates in this publication are based on information gained from the occupants of a sample survey of dwellings. Because the entire population is not surveyed, the published estimates are subject to sampling error. The most common way of quantifying such sampling error is to calculate the standard error for the published estimate or statistic. For more information, see paragraphs 25 to 27 of the Explanatory Notes.

### LEVEL ESTIMATES

To illustrate, let us say the published level estimate for employed persons aged 15–19 years is 700,000 and the associated standard error is 9,000. The standard error is then used to interpret the level estimate of 700,000. For instance, the standard error of 9,000 indicates that:

- There are approximately two chances in three that the real value falls within the range 691,000 to 709,000 (700,000 + or – 9,000)
- There are approximately nineteen chances in twenty that the real value falls within the range 682,000 to 718,000 (700,000 + or – 18,000).

The real value in this case is the result we would obtain if we could enumerate the total population.

The following table shows the standard errors for this month's level estimates.

		AUSTRALIA										
		NSW	Vic.	Qld	SA	WA	Tas.	NT	ACT	Males	Females	Persons
<b>Aged 15 years and over</b>												
Employed												
Full time	'000	25.1	18.0	17.2	7.3	11.2	2.8	2.3	2.8	31.4	22.6	38.0
Part time	'000	18.1	11.8	11.3	5.4	7.7	2.2	0.7	2.0	13.1	20.7	25.5
Total	'000	27.7	22.1	19.6	8.5	12.2	3.3	2.7	3.0	34.2	31.7	43.1
Unemployed												
Looking for f/t work	'000	9.0	7.7	7.8	3.2	4.1	1.3	0.8	0.8	11.8	9.3	15.2
Looking for p/t work	'000	5.9	4.7	4.5	2.0	2.8	0.7	0.3	0.7	5.8	7.4	9.4
Total	'000	10.8	9.1	8.8	3.6	5.0	1.5	1.0	1.1	13.3	12.0	18.1
Labour force	'000	28.1	22.8	20.0	8.7	12.3	3.4	2.8	3.0	35.1	32.6	43.9
Not in labour force	'000	24.1	20.8	22.3	8.2	11.8	3.5	3.0	3.1	30.5	35.5	41.8
Unemployment rate												
Looking for f/t work	pts	0.3	0.4	0.4	0.6	0.4	0.8	0.7	0.5	0.2	0.3	0.2
Looking for p/t work	pts	0.5	0.5	0.6	0.7	0.7	0.8	1.3	1.1	0.5	0.3	0.3
Total	pts	0.3	0.3	0.4	0.4	0.4	0.6	0.7	0.5	0.2	0.2	0.1
Participation rate	pts	0.5	0.5	0.5	0.6	0.6	0.8	1.6	1.0	0.4	0.3	0.2
<b>Aged 15–19 years</b>												
Employed												
Full time	'000	3.8	2.0	2.7	0.9	1.8	0.5	0.2	0.4	4.7	3.8	5.5
Part time	'000	5.6	3.4	4.0	1.8	2.4	0.6	0.2	0.7	6.1	6.9	8.8
Total	'000	6.5	3.8	4.8	1.9	2.9	0.8	0.3	0.7	7.2	7.5	10.1
Unemployed												
Looking for f/t work	'000	2.6	2.2	3.2	1.0	1.5	0.6	0.3	0.3	3.9	3.4	5.1
Looking for p/t work	'000	3.0	2.6	2.9	1.0	1.4	0.4	0.1	0.5	3.8	3.8	5.4
Total	'000	4.1	3.5	4.5	1.5	2.1	0.7	0.3	0.6	5.4	5.1	7.5
Labour force	'000	7.1	4.2	5.4	2.1	3.2	0.9	0.3	0.8	7.9	8.0	11.1
Not in labour force	'000	9.6	6.0	7.9	3.0	4.4	1.2	0.7	1.4	10.8	10.0	15.2
Unemployment rate												
Looking for f/t work	pts	3.9	5.3	4.9	8.5	4.7	7.2	6.6	13.7	2.6	3.9	2.2
Looking for p/t work	pts	1.8	2.0	2.3	2.4	2.6	4.0	1.7	4.8	1.6	1.2	1.0
Total	pts	1.7	2.0	2.4	2.8	2.4	3.9	3.2	4.6	1.4	1.3	1.0
Participation rate	pts	1.5	1.2	1.7	2.0	2.0	2.7	1.9	3.5	1.0	1.1	0.7
Unemployment to population ratio – looking for f/t work	pts	0.6	0.6	1.0	1.0	0.9	1.6	1.6	1.2	0.5	0.5	0.3

## STANDARD ERRORS *continued*

### MOVEMENT ESTIMATES

The following example illustrates how to use the standard error to interpret a movement estimate. Let us say that one month the published level estimate for females employed part-time in Australia is 1,890,000; the next month the published level estimate is 1,900,000 and the associated standard error for the movement estimate is 11,900. The standard error is then used to interpret the published movement estimate of 10,000. For instance, the standard error of 11,900 indicates that:

- There are approximately two chances in three that the real movement between the two months falls within the range – 1,900 to 21,900 (10,000 + or – 11,900)
- There are approximately nineteen chances in twenty that the real movement falls within the range – 13,800 to 33,800 (10,000 + or – 23,800).

The following table shows the standard errors for this month's movement estimates.

		AUSTRALIA										
		NSW	Vic.	Qld	SA	WA	Tas.	NT	ACT	Males	Females	Persons
<b>Aged 15 years and over</b>												
Employed												
Full time	'000	15.8	12.8	10.2	4.2	7.1	1.8	1.9	1.9	19.8	14.5	25.1
Part time	'000	10.4	8.8	6.1	3.0	4.4	1.4	0.9	1.2	9.0	13.4	16.1
Total	'000	19.2	15.8	13.7	5.9	9.0	2.3	2.1	2.3	21.9	20.0	30.8
Unemployed												
Looking for f/t work	'000	9.8	8.1	7.7	3.5	4.6	1.4	0.9	1.2	12.5	9.9	16.1
Looking for p/t work	'000	6.4	5.0	4.2	2.1	3.1	0.8	0.4	0.9	6.1	7.8	10.0
Total	'000	11.8	9.6	8.9	4.1	5.5	1.6	0.9	1.3	14.0	12.7	19.2
Labour force	'000	19.7	16.3	14.5	6.3	9.4	2.4	2.2	2.3	22.6	20.5	31.8
Not in labour force	'000	19.3	16.1	14.6	6.3	9.3	2.3	2.1	2.4	19.1	23.5	31.4
Unemployment rate												
Looking for f/t work	pts	0.3	0.4	0.5	0.6	0.4	0.8	0.8	0.6	0.2	0.3	0.2
Looking for p/t work	pts	0.5	0.5	0.7	0.7	0.7	0.8	1.3	1.1	0.5	0.3	0.3
Total	pts	0.3	0.3	0.4	0.4	0.4	0.6	0.7	0.5	0.2	0.2	0.2
Participation rate	pts	0.3	0.3	0.4	0.5	0.5	0.6	1.2	0.8	0.2	0.2	0.2
<b>Aged 15–19 years</b>												
Employed												
Full time	'000	2.8	2.0	2.0	0.8	1.5	0.4	0.4	0.4	3.7	3.0	4.3
Part time	'000	4.2	3.5	2.8	1.3	2.0	0.5	0.4	0.5	4.6	5.2	6.5
Total	'000	4.8	3.8	3.3	1.5	2.3	0.6	0.5	0.6	5.5	5.6	7.4
Unemployed												
Looking for f/t work	'000	2.9	2.4	3.0	1.2	1.7	0.6	0.3	0.6	4.1	3.6	5.5
Looking for p/t work	'000	3.4	2.9	2.8	1.1	1.6	0.5	0.1	0.6	4.0	4.1	5.7
Total	'000	4.5	3.8	4.2	1.6	2.4	0.7	0.3	0.8	5.8	5.4	7.9
Labour force	'000	5.1	4.1	3.5	1.6	2.4	0.7	0.6	0.6	5.9	5.9	7.9
Not in labour force	'000	6.4	5.3	4.1	2.0	3.0	0.8	0.9	0.8	7.6	7.1	9.9
Unemployment rate												
Looking for f/t work	pts	4.1	5.4	5.1	8.8	4.5	8.1	6.7	14.1	2.7	4.2	2.3
Looking for p/t work	pts	1.9	2.0	2.3	2.5	2.6	4.2	1.6	5.1	1.6	1.2	1.0
Total	pts	1.8	2.0	2.4	2.9	2.3	4.0	3.3	5.0	1.4	1.3	1.0
Participation rate	pts	1.1	1.1	1.1	1.5	1.5	2.0	3.4	2.7	0.8	0.8	0.5
Unemployment to population ratio – looking for f/t work	pts	0.6	0.7	1.0	1.2	1.1	1.7	1.7	2.3	0.5	0.5	0.4

## GLOSSARY

<b>Actively looking for work</b>	Includes writing, telephoning or applying to an employer for work; answering an advertisement for a job; checking noticeboards; being registered with Centrelink as a jobseeker; checking or registering with any other employment agency; advertising or tendering for work; and contacting friends or relatives.
<b>Actual hours of work</b>	<p>Actual hours of work refers to a specified reference period and includes:</p> <ul style="list-style-type: none"><li>■ hours actually worked during normal periods of work;</li><li>■ time spent in addition to hours worked during normal periods of work (including overtime);</li><li>■ time spent at the place of work on activities such as the preparation of the workplace, repairs and maintenance, preparation and cleaning of tools, and the preparation of receipts, time sheets and reports;</li><li>■ time spent at the place of work waiting or standing by; and</li><li>■ time corresponding to short rest periods.</li></ul> <p>Excluded are:</p> <ul style="list-style-type: none"><li>■ hours paid for but not worked, such as paid annual leave, public holidays or paid sick leave;</li><li>■ meal breaks; and</li><li>■ time spent on travel to and from work (excluding some self-employed).</li></ul> <p>For multiple job holders actual hours worked should equal the hours worked at all jobs.</p>
<b>Aggregate monthly hours worked</b>	<p>Aggregate monthly hours worked measures the total number of actual hours worked by employed persons in a calendar month. It differs from the actual hours worked estimates (and the usual hours worked estimates) since these refer only to the hours worked in the reference week.</p> <p>The methodology used to produce aggregate monthly hours worked means that these are synthetic estimates. Seasonally adjusted and trend estimates of aggregate monthly hours worked are available for the period July 1978 onwards.</p> <p>Further information on the methodology used to produce the aggregate monthly hours worked estimates is available on the ABS website in <i>Information Paper: Expansion of Hours Worked Estimates from the Labour Force Survey</i> (cat. no. 6290.0.55.001).</p> <p>Actual and usual hours worked cannot be aggregated across time to produce either quarterly or annual estimates as they relate to only a single week in the month. In contrast, aggregate monthly hours worked estimates are a true monthly measure, and may be aggregated across time to produce both quarterly and annual estimates.</p>
<b>Attending full time education</b>	Persons aged 15–24 years enrolled at secondary or high school or enrolled as a full time student at a Technical and Further Education (TAFE) college, university, or other educational institution in the reference week.
<b>Attending school</b>	Persons aged 15–19 years enrolled at secondary or high school in the reference week.
<b>Attending tertiary educational institution full time</b>	Persons aged 15–24 years enrolled full time at a TAFE college, university, or other educational institution in the reference week, except those persons aged 15–19 years who were still attending school.
<b>Civilian population aged 15 years and over</b>	All usual residents of Australia aged 15 years and over except members of the permanent defence forces, certain diplomatic personnel of overseas governments customarily excluded from census and estimated population counts, overseas residents in Australia, and members of non-Australian defence forces (and their dependants) stationed in Australia.
<b>Composite Estimation</b>	The estimation methodology used in the Labour Force Survey. Composite Estimation uses sample responses from nearby months as well as from the reference month to derive estimates for the reference month. This approach achieves gains in efficiency by exploiting the high similarity between the responses provided by the same respondent in

## GLOSSARY *continued*

previous months. For details see *Information Paper: Forthcoming Changes to Labour Force Statistics, 2007* (cat. no. 6292.0).

**Employed** All persons aged 15 years and over who, during the reference week:

- worked for one hour or more for pay, profit, commission or payment in kind in a job or business, or on a farm (comprising employees, employers and own account workers); or
- worked for one hour or more without pay in a family business or on a farm (i.e. contributing family workers); or
- were employees who had a job but were not at work and were:
  - away from work for fewer than four weeks up to the end of the reference week; or
  - away from work for more than four weeks up to the end of the reference week and received pay for some or all of the four week period to the end of the reference week; or
  - away from work as a standard work or shift arrangement; or
  - on strike or locked out; or
  - on workers' compensation and expected to return to their job; or
- were employers or own account workers, who had a job, business or farm, but were not at work.

**Employment to population ratio** For any group, the number of employed persons expressed as a percentage of the civilian population in the same group.

**Estimated resident population (ERP)** Estimated resident population (ERP), is Australia's official measure of the population of Australia and is based on the concept of usual residence. It refers to all people, regardless of nationality, citizenship or legal status, who usually live in Australia, with the exception of foreign diplomatic personnel and their families. It includes usual residents who are overseas for fewer than 12 months. It excludes overseas visitors who are in Australia for fewer than 12 months. Refer to *Australian Demographic Statistics* (cat. no. 3101.0).

**Flow estimates** Flow estimates are a measure of activity over a given period. For example, aggregate monthly hours worked is a measure of the total number of hours worked in a calendar month.

**Full time workers** Employed persons who usually worked 35 hours or more a week (in all jobs) and those who, although usually working fewer than 35 hours a week, worked 35 hours or more during the reference week.

**Gross flows** The matching of respondents who report in consecutive months enables analysis of the transition of individuals between the different labour force status classifications, referred to as the matched sample. The transition counts between the different labour force status classifications from one point in time to the next are commonly referred to as gross flows.

The figures presented in gross flows are presented in original terms only and do not align with published labour force estimates. The gross flows figures are derived from the matched sample between consecutive months, which after taking account of the sample rotation and varying non-response in each month is approximately 80 percent of the sample.

Caution should be exercised when analysing these gross flows data due to:

- the figures presented sum to approximately 80 percent of the population values as the gross flows data are based on the matched sample only;
- there is no adjustment applied to account for changes due to seasonal patterns (referred to commonly as seasonal adjustment); and
- the estimates of relative sizes of each transition class are subject to bias due to the matched sample being a non-representative sample.

**Labour force** For any group, persons who were employed or unemployed, as defined.

## GLOSSARY *continued*

<b>Labour force status</b>	A classification of the civilian population aged 15 years and over into employed, unemployed or not in the labour force, as defined. The definitions conform closely to the international standard definitions adopted by the International Conferences of Labour Statisticians.
<b>Labour force underutilisation rate</b>	The sum of the number of persons unemployed and the number of persons in underemployment, expressed as a proportion of the labour force.
<b>Long-term unemployed</b>	The number of persons unemployed for 52 weeks or over.
<b>Long-term unemployment ratio</b>	The number of long-term unemployed persons, expressed as a percentage of the total unemployed population.
<b>Market sector</b>	The market sector is an industry grouping comprising the following industries: Agriculture, forestry and fishing; Mining; Manufacturing; Electricity, gas, water and waste services; Construction; Wholesale trade; Retail trade; Accommodation and food services; Transport, postal and warehousing; Information media and telecommunications; Finance and insurance services; Rental, hiring and real estate services; Professional, scientific and technical services; Administrative and support services; Arts and recreation services; and Other services. Refer to <i>Australian National Accounts: Concepts, Sources and Methods</i> (cat. no. 5216.0).
<b>Non-market Sector</b>	The non-market sector is an industry grouping comprising the following industries: Education and training; Public administration & safety; and Health care and social assistance. Refer to <i>Australian National Accounts: Concepts, Sources and Methods</i> (cat. no. 5216.0).
<b>Not in labour force</b>	Persons who were not in the categories employed or unemployed, as defined.
<b>Participation rate</b>	For any group, the labour force expressed as a percentage of the civilian population aged 15 years and over in the same group.
<b>Part time workers</b>	Employed persons who usually worked fewer than 35 hours a week (in all jobs) and either did so during the reference week or were not at work during the reference week.
<b>Response rate</b>	The number of fully responding dwellings expressed as a percentage of the total number of dwellings excluding sample loss. Examples of sample loss include: dwellings where all persons are out of scope and/or coverage; vacant dwellings; dwellings under construction; dwellings converted to non-dwellings; derelict dwellings; and demolished dwellings.
<b>Seasonally adjusted series</b>	A time series of estimates with the estimated effects of normal seasonal variation removed. See Explanatory Notes paragraphs 28 to 32 for more detail.
<b>Stock estimates</b>	Stock estimates are a measure of certain attributes at a point in time and can be thought of as <i>stocktakes</i> . For example, the total number of employed persons is an account of the number of people who were considered employed in the Labour Force Survey reference week.
<b>Trend series</b>	A smoothed seasonally adjusted series of estimates. See Explanatory Notes paragraphs 33 to 36 for more detail.
<b>Underemployment rate</b>	The number of underemployed workers expressed as a percentage of the labour force.
<b>Underemployed workers</b>	Employed persons aged 15 years and over who want, and are available for, more hours of work than they currently have. They comprise: <ul style="list-style-type: none"><li>■ persons employed part time who want to work more hours and are available to start work with more hours, either in the reference week or in the four weeks subsequent to the survey; or</li><li>■ persons employed full time who worked part time hours in the reference week for economic reasons (such as being stood down or insufficient work being available). It is assumed that these people wanted to work full time in the reference week and would have been available to do so.</li></ul>

## GLOSSARY *continued*

---

<b>Unemployed</b>	Persons aged 15 years and over who were not employed during the reference week, and: <ul style="list-style-type: none"><li>■ had actively looked for full time or part time work at any time in the four weeks up to the end of the reference week and were available for work in the reference week; or</li><li>■ were waiting to start a new job within four weeks from the end of the reference week and could have started in the reference week if the job had been available then.</li></ul>
<b>Unemployed looking for full time work</b>	Unemployed persons who: <ul style="list-style-type: none"><li>■ actively looked for full time work; or</li><li>■ were waiting to start a new full time job.</li></ul>
<b>Unemployed looking for part time work</b>	Unemployed persons who: <ul style="list-style-type: none"><li>■ actively looked for part time work only; or</li><li>■ were waiting to start a new part time job.</li></ul>
<b>Unemployment rate</b>	For any group, the number of unemployed persons expressed as a percentage of the labour force in the same group.
<b>Unemployment to population ratio</b>	For any group, the number of unemployed persons expressed as a percentage of the civilian population in the same group.
<b>Usual hours of work</b>	Usual hours of work refers to a typical period rather than to a specified reference period. The concept of usual hours applies both to persons at work and to persons temporarily absent from work, and is defined as the hours worked during a typical week or day. Actual hours worked (for a specific reference period) may differ from usual hours worked due to illness, vacation, strike, overtime work, a change of job, or similar reasons.

## FOR MORE INFORMATION . . .

*INTERNET*      **www.abs.gov.au** the ABS website is the best place for data from our publications and information about the ABS.

### INFORMATION AND REFERRAL SERVICE

Our consultants can help you access the full range of information published by the ABS that is available free of charge from our website. Information tailored to your needs can also be requested as a 'user pays' service. Specialists are on hand to help you with analytical or methodological advice.

*PHONE*                      1300 135 070

*EMAIL*                      [client.services@abs.gov.au](mailto:client.services@abs.gov.au)

*FAX*                              1300 135 211

*POST*                              Client Services, ABS, GPO Box 796, Sydney NSW 2001

## FREE ACCESS TO STATISTICS

All statistics on the ABS website can be downloaded free of charge.

*WEB ADDRESS*      [www.abs.gov.au](http://www.abs.gov.au)